

SIS Thermal Desorption Software

Release 1.2.0

Scientific Instrument Services, Inc.

March 10, 2014

CONTENTS

Quick Start Notes	3
Support	3
Forward	5
About the Manual	5
0.1 Notice	5
1 Software Introduction	7
System Requirements and Compatibility	11
Overview	11
GC/MS Instrument Compatibility	12
ChemStation/MassHunter Compatibility	12
Operating System Compatibility	13
2 Software Installation	15
2.1 Overview	15
2.2 Preparation	15
2.3 Installation	16
2.4 Configure TD Software	20
2.5 Reinstalling or Upgrading MassHunter/ChemStation	22
2.6 Uninstallation	22
2.7 Starting the Thermal Desorption Software	22
2.8 Validating the TD Software	23
3 Software Operation	27
3.1 Overview	28
3.2 Getting Started	28
3.3 System Startup	28
3.4 Using TD Methods	28
3.5 Saving settings	29
3.6 Running a Single Sample	29
3.7 Running a Sequence of Samples (AutoDesorb)	31
4 GUI Windows	35
4.1 Configuration Window	36
4.2 Method Window	46
4.3 Status Window	49
4.4 Sample Log Book	51
4.5 Menu Bar and Toolbar	52

4.6	Run Window	54
4.7	Sequence Window	55
4.8	Manual Control Window	57
4.9	Advanced Diagnostics Windows	58
5	Thermo Xcalibur Usage	61
5.1	Overview	61
5.2	Installation	62
5.3	Flow Control - Trace GC	62
5.4	Handshaking signals between the Trace GC and AutoDesorb	62
5.5	Running Samples	63
5.6	Additional Notes	67
6	ChemStation/MassHunter Modifications	69
6.1	Technical Details	69
7	Software License Agreement	71
8	Software Change List	73
	Index	79



For the SIS TD-5 and AutoDesorb 2000 Short Path Thermal Desorption Systems

Scientific Instrument Services, Inc. 1027 Old York Rd. Ringoes, NJ 08551 (908) 788-5550
<http://www.sisweb.com/sptd>

QUICK START NOTES

Included is the SIS Thermal Desorption software version 1.2.0 (2014-02-26) supporting the SIS TD5 (single-shot) and SIS AutoDesorb 2000 (multi-sample) thermal desorption systems for volatile and semi-volatile analysis.

Manuals and Documentation provided include

- TD5 User Manual [PDF]
- AutoDesorb Install [PDF]
- AutoDesorb Operation [PDF]
- *SIS Thermal Desorption Software Documentation* (page 1) (Windows Help File or [PDF]) (for both TD-5 and AutoDesorb)

Further documentation is available on our web site: www.sisweb.com/sptd¹

- **product info**
- **application notes** - dozens of papers and articles on applying the thermal desorption technique
- **adsorbent resins data** - extensive breakthrough volume data per resin, compound, and temperature
- **supplies** - tubes, needles, absorbents, cryo-traps, conditioning ovens, purge & trap, sampling systems, ...

Installation procedures are described in the hardware manuals and this software manual (*Software Installation* (page 15)).

Startup of the TD software will occur automatically when your GC data system is started if the TD software is integrated with Agilent ChemStation or MassHunter. Otherwise, you start the SIS Thermal Desorption Program from the Windows Start menu.

Support

For assistance (phone/e-mail/on-site), please contact SIS. Phone: 1-(908)-788-5550, Fax: 1-(908)-806-6631, E-mail: www.sisweb.com/contact.htm² Home Page: www.sisweb.com³

¹<http://www.sisweb.com/sptd>

²<http://www.sisweb.com/contact.htm>

³<http://www.sisweb.com>

FORWARD

About the Manual

This manual covers the installation and operation of the SIS Thermal Desorption Software for the SIS TD-5 and AutoDesorb thermal desorption systems.

The information in this manual is provided with the assumption that the user is familiar with general gas chromatography (GC) concepts and the operation of the instrument on which the thermal desorption system is installed. Refer to the manuals supplied by the manufacturer of your GC for specifics on your GC and GC data system software.

Additional information can be found on the thermal desorption section of the SIS web site: www.sisweb.com/sptd⁴. This includes product information, application notes, and adsorbent resins data. Please let us know if anything is unclear or could be improved in this manual.

0.1 Notice

The information contained in this document is subject to change without notice.

Scientific Instrument Services (S.I.S.) makes no warranty of any kind with regard to the material contained in this manual, including, but not limited to, the implied warranties of merchantability and fitness of the equipment and techniques therein described for a particular purpose.

S.I.S. shall not be liable for errors contained herein or for incidental or consequential damages in connection with the furnishing, operation, performance or use of the SIS Short Path Thermal Desorption System described in this manual.

S.I.S. assumes no responsibility for the use or reliability of its equipment that is not furnished by S.I.S.

This document contains proprietary information which is protected by copyright and patents. All rights are reserved. No part of this document may be photocopied, reproduced or translated to another language without the prior written consent of Scientific Instrument Services, Inc.

⁴<http://www.sisweb.com/sptd/>

SOFTWARE INTRODUCTION

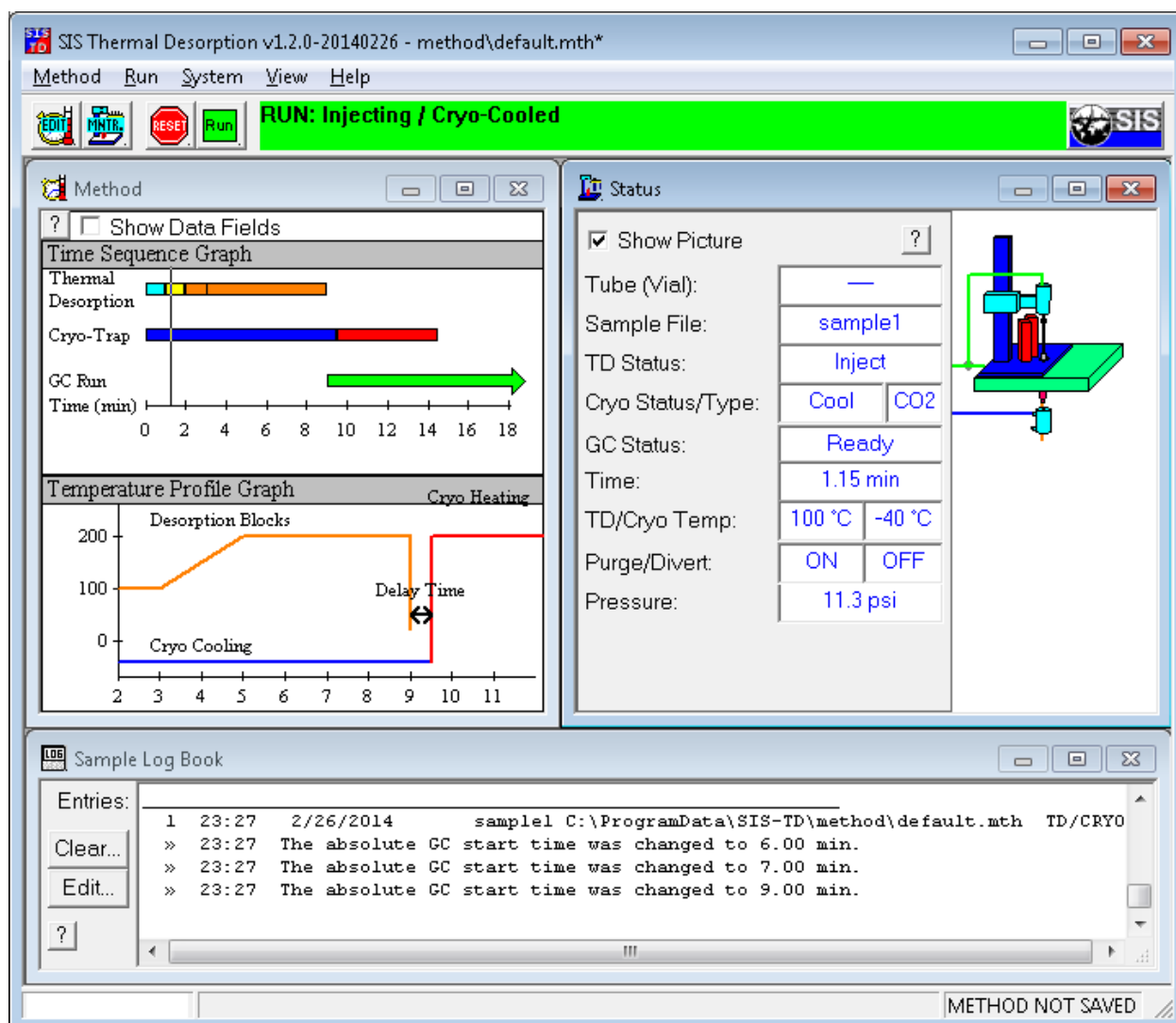


Figure 1.1: Thermal Desorption Software

The **SIS Thermal Desorption Software** (TD Software) controls and operates an SIS short path thermal desorption system, such as the SIS TD-5 (single sample) or SIS AutoDesorb 2000 (multi-sample) model. The TD Software

provides a graphical user interface (GUI) from which the operator can configure the TD settings and run parameters, control the TD operation, and monitor the TD system (e.g. temperatures and pressures). The TD Software resides on a Windows-based personal computer that is connected to the TD hardware (electronics console) via a serial RS-232 communication cable (or optionally USB via a serial <-> USB converter cable).

The TD system can be operated with the GC in either of two modes: **standalone mode** (independent of the GC data system software) and **integrated mode** (integrated with the GC data system software). Which you use will depend on whether the TD Software is able to integrate with your particular type of GC data system software. Currently, the integrated mode only works on most versions of **Agilent MassHunter** and **Agilent (HP) ChemStation** GC data systems. (Check *System Requirements and Compatibility* (page 11) for specific compatibility requirements or call SIS.) The standalone mode can work with any GC that the TD system is physically compatible with. The advantage of the integrated mode is that TD run settings are stored within (linked to) the GC method, and the run operation is a bit more coordinated—e.g. the TD system will start automatically when a new sample run is invoked from the GC data system. The integrated mode is especially recommended when running sequences on the AutoDesorb. If using integrated mode, the TD Software and GC data system software must reside on the same computer to communicate. In both modes, the TD controller hardware starts the GC run via a contact closure cable connected between the TD controller and GC, though you could alternately press the Run button on the GC.



Figure 1.2: SIS TD-5 short path thermal system, which supports a single sample.



Figure 1.3: SIS AutoDesorb 2000 short path thermal system system, which supports multiple samples.

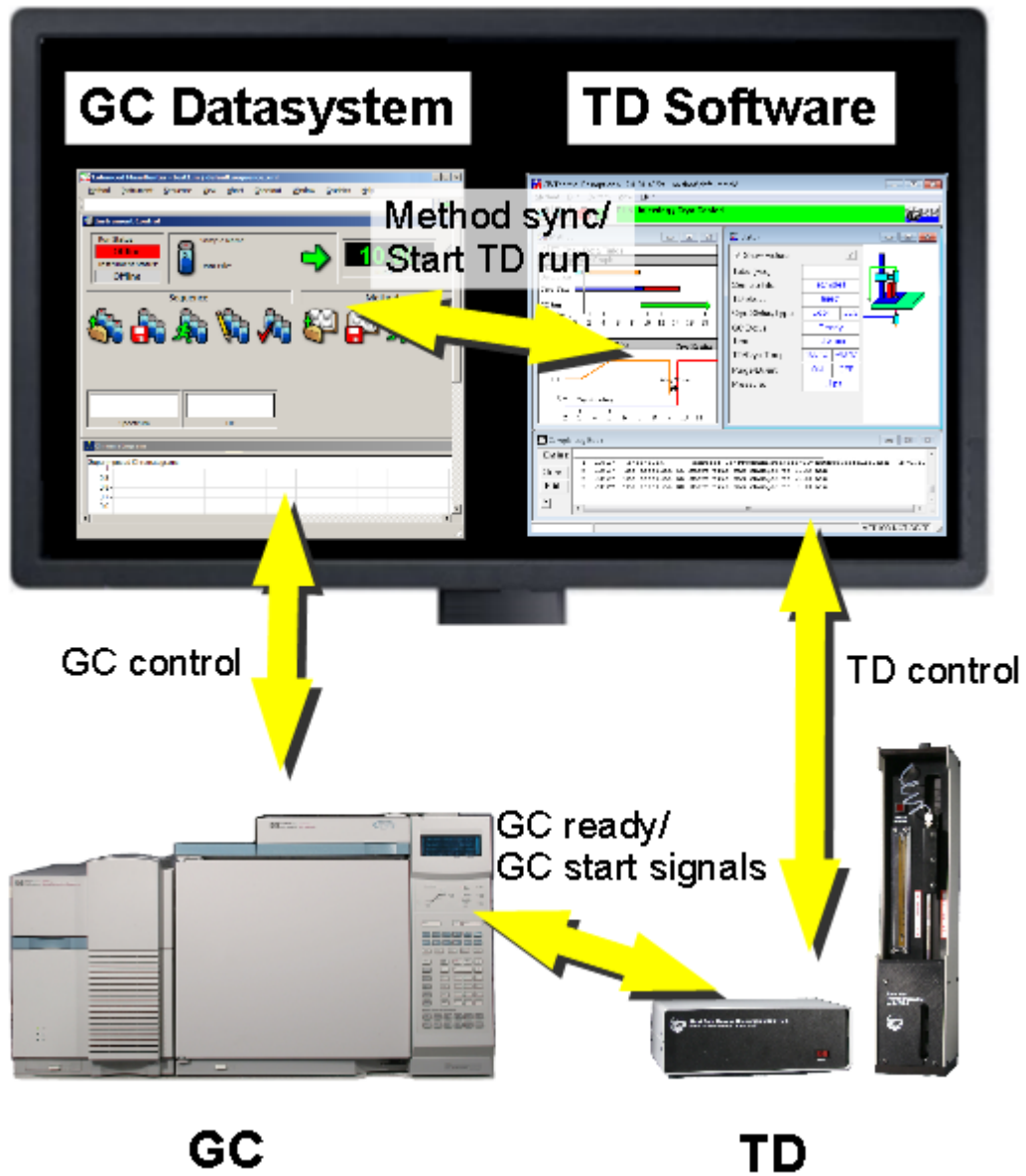


Figure 1.4: Communications between TD hardware, TD software, GC data system software, and GC.

SYSTEM REQUIREMENTS AND COMPATIBILITY

Overview

Please check system compatibility requirements before installing your system. If unsure, just call us and we will confirm compatibility and ensure you have the latest TD software. The information below is provided for reference.

Factors to consider include

- **GC and/or MS instrument** (e.g. Agilent 6890 with 5973).
- **GC data system software and version** (e.g. Agilent ChemStation E.02.00.493).
- **Windows operation system version** (e.g. Windows XP or 7).
- **SIS TD instrument type** (e.g. SIS AutoDesorb or TD-5).
- **SIS TD software version** (e.g. 1.0, 1.1, 1.2). We will provide the correct version if you don't have it.

Main questions to answer include

- **Is the SIS TD software compatible with your operating system?** SIS TD software version 1.2 works with Windows 2000 through at least Windows 8.0 (including XP and 7). SIS TD software versions 1.0/1.1 are not compatible with Windows 7 but do support older operating systems (Win95/NT4).
- **Is the SIS TD software compatible with your GC data system (e.g. ChemStation/MassHunter)?** SIS TD software version 1.2 integrates with most versions of GC ChemStation (A.xx - B.xx), MS ChemStation (B.xx - E.xx), and MassHunter (B.xx) as of 2014, though the latest version might no longer support some very old 1990's era versions. See "ChemStation/MassHunter Compatibility" below for details. The TD software can also be used in stand-alone mode (not communicating at all with any GC data system), such as has been done on some Thermo and Varian GC's (*Thermo Xcalibur Usage* (page 61)).
- **Is the SIS TD physically compatible with mounting on the top of your GC and connecting a remote start cable?** We have long supported 5890 and 6890 GC's for many instruments. Other Agilent GCs and some non-Agilent GCs (Thermo and Varian) may be supported too. Some instruments may require adaptation for the GC mounting plate or contact closure cables. Contact us for details.
- **Is your GC data system (e.g. ChemStation or MassHunter) compatible with your GC and operating system?** This question is only pertinent if you haven't yet installed your GC. Please note that older GC/MS systems with HPIB communication may not work on newer "E" versions ChemStation or MassHunter. Contact us or check ChemStation/MassHunter compatibility matrices on the Agilent web site.
 - [GC ChemStation Compatibility Matrix](#)¹
 - [GC ChemStation Compatibility Matrix \(OS\)](#)²
 - [GC/MS ChemStation Compatibility Matrix](#)³

¹<http://www.chem.agilent.com/Library/Support/Documents/a10674.pdf>

²<http://www.chem.agilent.com/Library/Support/Documents/FAQ918%20F03013.pdf>

³<http://www.chem.agilent.com/Library/Support/Documents/F05030.pdf>

GC/MS Instrument Compatibility

We have long supported 5890 and 6890 GC's for many instruments. Other Agilent GCs and some non-Agilent GCs (Thermo and Varian) may be supported too. The SIS TD software should work with any Agilent GC that is compatible with a version of ChemStation or MassHunter that the TD software is compatible with. Contact us for details.

- 5890 - officially supported
- 6890 (A and N) - officially supported. The 6890N (Networked version) requires purchasing an Agilent grey "Y" cable (G1530-61200) for remote start.
- 7810 (sold with 5975T MSD) - Contact us.
- 7820 (sold with 5975E MSD) - Contact us.
- 7890 (A/A+/B) - has been done but requires mounting plate remachining. Contact us.
- 6850 - mounting plate issue. Contact us.
- Thermo or Varian GC's - Contact us.

ChemStation/MassHunter Compatibility

SIS TD software version 1.2 integrates with most versions of GC ChemStation (A.xx - B.xx), MS ChemStation (B.xx - E.xx), and MassHunter (B.xx) as of 2014. If not, we would typically provide a quick software patch to make it work. Contact us if you have any questions. Below are some details on compatibility testing for reference.

- **MS ChemStations and MassHunter**
 - **MassHunter B.07** - SIS TD version 1.2 works with MassHunter B.07 and probably other MassHunter versions too. Previous SIS TD versions were largely incompatible with MassHunter. The SIS TD software version 1.2 was tested on B.07.00.1413 (12-May-2013). Note that MassHunter B.07 includes an "F" version of ChemStation Data Analysis (e.g. MassHunter B.07.00.1413 includes Data Analysis version F.01.00.1903).
 - **G1701EA E.xx.xx** - SIS TD 1.2 is compatible. 1.2 was tested on G1701EA E.02.00.493 (2008) and E.02.02.1431 and should work on other E versions. Prior SIS TD versions had a few compatibility issues (Data Analysis CF_Text error on E.02.02.1431).
 - **G1701DA D.xx.xx** - SIS TD 1.2 and 1.1 are compatible. 1.2 was tested on G1701DA D.03.00.552 and should work on other D versions. 1.1 was tested more extensively on various G1701DA D.xx.xx versions. 1.1.1 added G1701DA D.02.00sp1 and D.01.02sp1 compatibility. Note that D.01.00sp1 supports a new hook interface that avoids the SIS TD software needing to customize standard macros.
 - **G1701CA C.xx.xx** - SIS TD 1.2 and 1.1 are compatible. 1.1 and 1.0 were tested more extensively on various C versions. 1.0 was tested on C.00.00.
 - **G1701BA B.xx.xx** - SIS TD 1.2, 1.1, and 1.0 are compatible. 1.2 was tested on G1701BA B.00.00 and should work on other B versions. SIS TD software versions 1.0/1.1 were tested more extensively on various G1701BA B.xx.xx versions of ChemStation.
 - **G1701AA A.xx.xx** - SIS TD 1.1 and 1.0 are compatible. SIS TD software version 1.0.x was tested on G1701AA A.xx.xx versions of ChemStation including A.01.00. 1.1 works too. 1.2 probably will not work since it requires Windows version 2000 or above.
 - **G1034C C.xx.xx** (~1996) - SIS TD software version 1.0.x was tested on G1034C C.03.00.00 (on 5890 GC), and the SIS TD software version 1.1.x may work too. SIS TD software version 1.2 probably will not work since it requires Windows version 2000 or above.
- **GC ChemStation**

- **G2070BA B.xx.xx** - SIS TD 1.2 and 1.1 are compatible. SIS TD 1.2 was tested on B.02.01. SIS TD 1.1.1 added compatibility for and was tested on B.01.03.
- **G2070AA A.xx.xx** - SIS TD 1.2, 1.1, and 1.0 are compatible. 1.2, 1.1, and 1.0 were tested on A.06.03. 1.0 was tested on A.06.01 too.
- Other versions, at least those newer than A.06.03, should work too.
- **Other GC data systems** may be supported by having the TD software run independently of the GC data system but synchronize with the GC via contact closure signals, as has been done on some Varian and Thermo GCs. Contact us for details. (*Thermo Xcalibur Usage* (page 61))

Operating System Compatibility

- SIS TD software version 1.2 was tested on Windows 2000 through Windows 7 (including XP) and should also work on Windows 8.
- SIS TD software version 1.1 and 1.0 have some compatibility problems with Windows 7, but they have also been tested on older operating systems (e.g. Windows NT or 95).

SOFTWARE INSTALLATION

2.1 Overview

This section describes the installation process for the SIS Thermal Desorption (TD) Software.

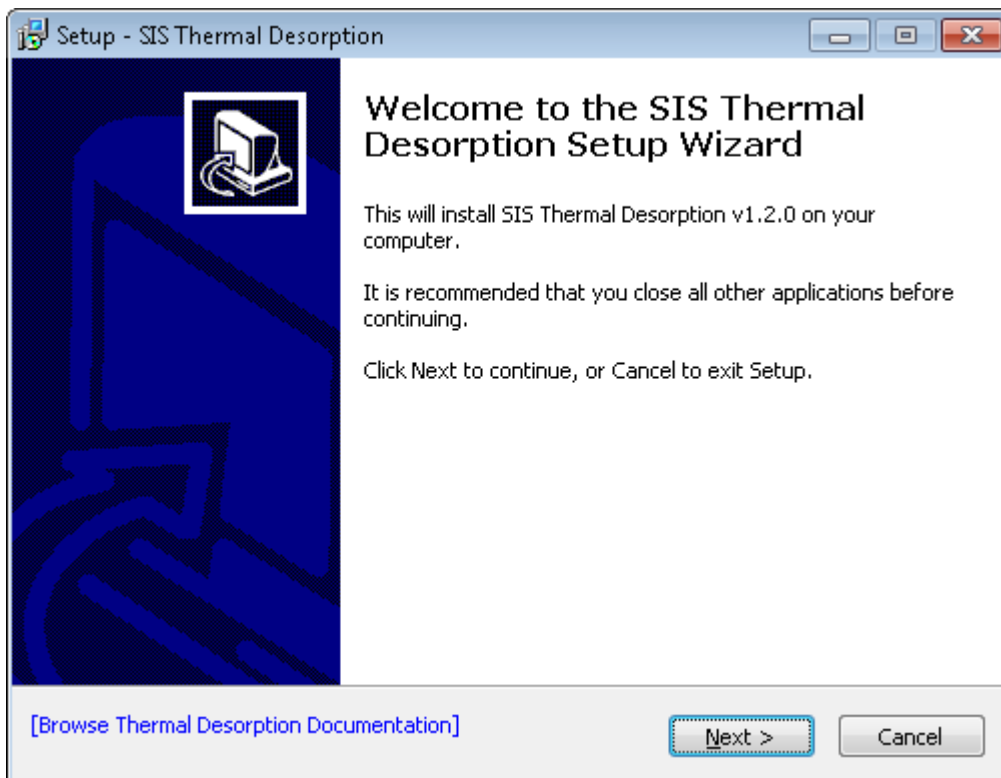


Figure 2.1: Welcome Page for installation of the Thermal Desorption Software.

2.2 Preparation

Before installing, consider these points:

- See *Software Introduction* (page 7) for an overview of the software.

- Check your software and hardware versions for compatibility, as described on *System Requirements and Compatibility* (page 11), or just call us.
- The GC data system software (e.g. MassHunter/ChemStation) can be installed before or after installing the TD software. We suggest installing the GC data system beforehand; otherwise, as a small additional step, you would need to enable integrated mode after installing the GC data system software. We also recommend testing that the GC works properly without a TD before installing the TD.
- The TD hardware may be installed and connected to the PC before or after installing the TD software. However, we do suggest doing a communications test with the TD hardware immediately after installing the software.
- The screenshots in this section might vary slightly from those you see.

2.3 Installation

The first part of the installation process is fairly typical: Run the setup program and follow the instructions on the screen. If you have an SIS Thermal Desorption Software CD, insert it. Typically, the window in the figure above will display automatically. You may be prompted to enter your administrator user name and password. (If installation program does not start automatically, select the Start menu from the Windows Taskbar and in the Run box enter `D:\setup.exe` where D is replaced by the drive letter of your CD-ROM drive on your system.)

Note: At any time, you can optionally click the blue [Browse Thermal Desorption Documentation](#) link in the installation program to view the online documentation:

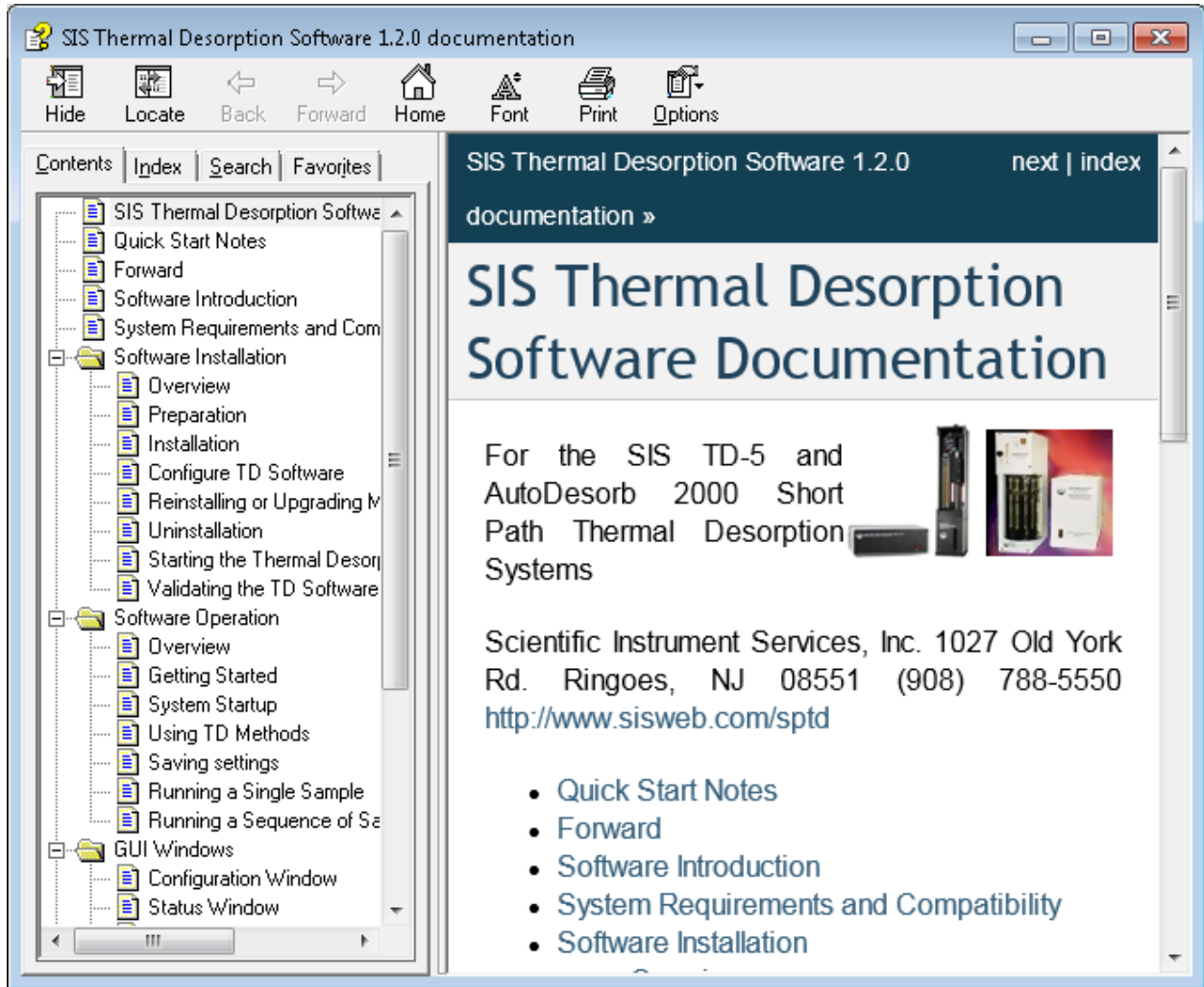


Figure 2.2: Online documentation.

Press Next. Select the folder to install the TD Software to (typically `c:\Program Files\SIS\TD`):

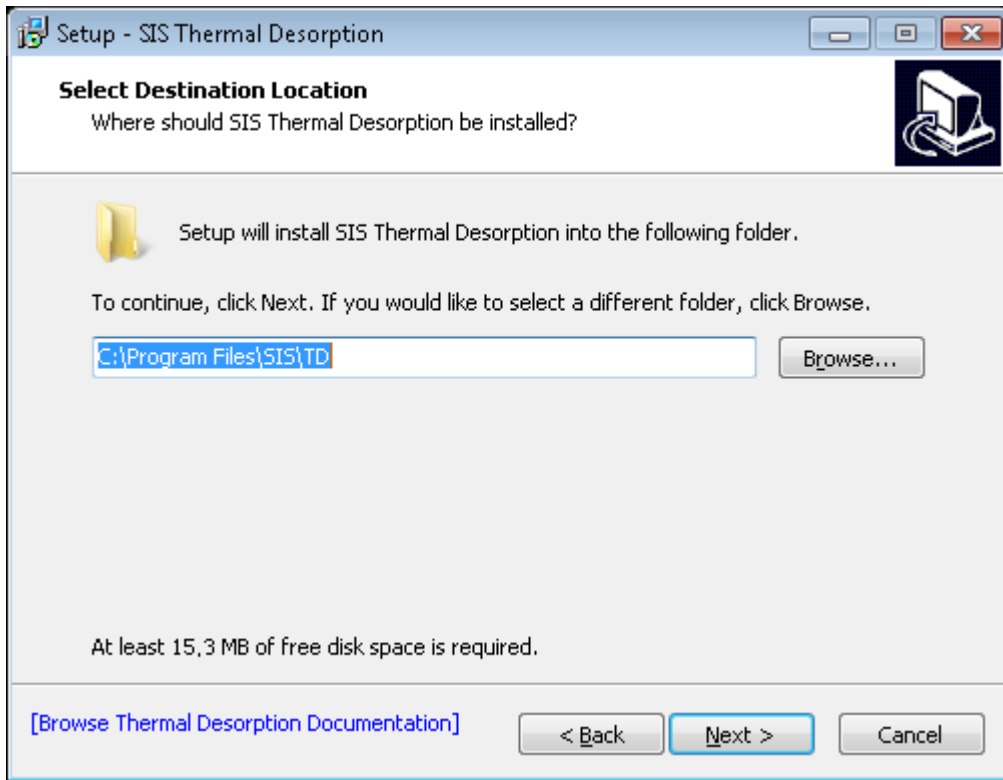


Figure 2.3: Selecting TD program folder.

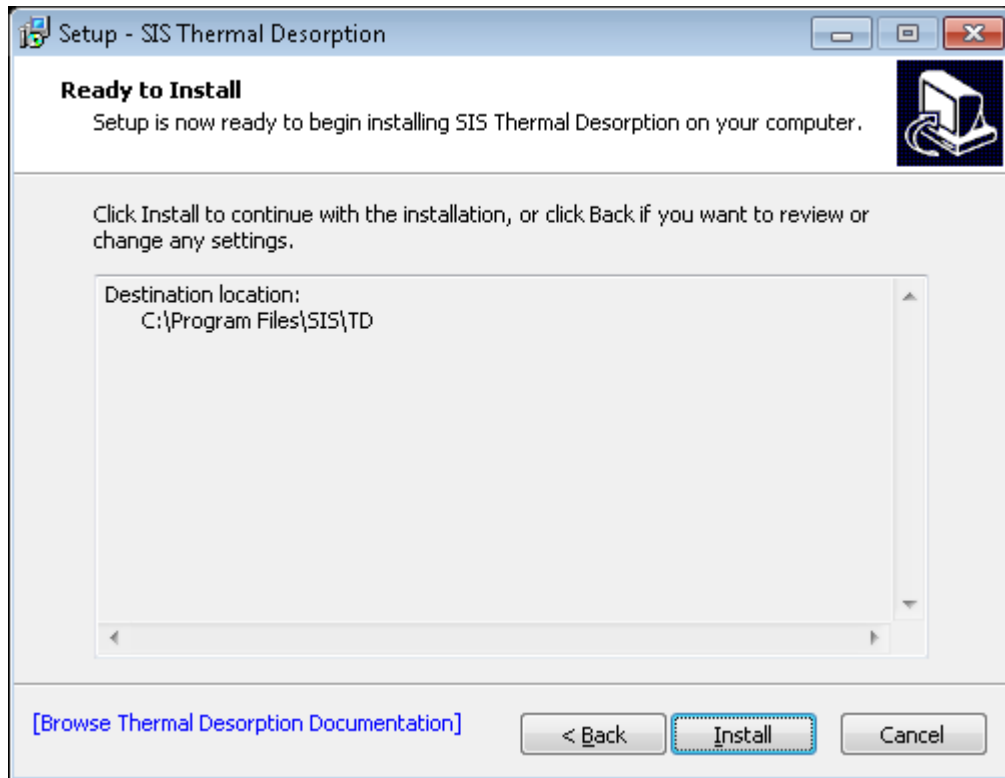


Figure 2.4: Ready to install files.

At the end of the installation, you will be prompted to configure the software, start the software, and view the documentation:

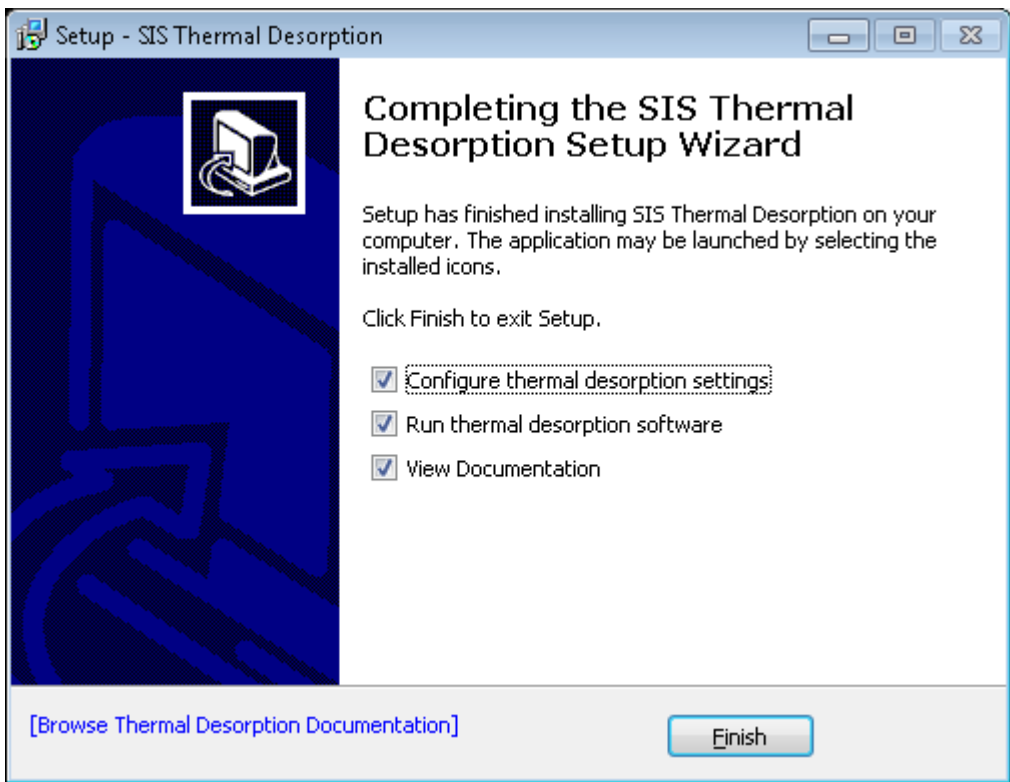


Figure 2.5: Installation of files complete.

2.4 Configure TD Software

You should now use the Configure dialog to setup communication between the TD software, TD hardware, and optionally GC data system. The configuration dialog looks like this:

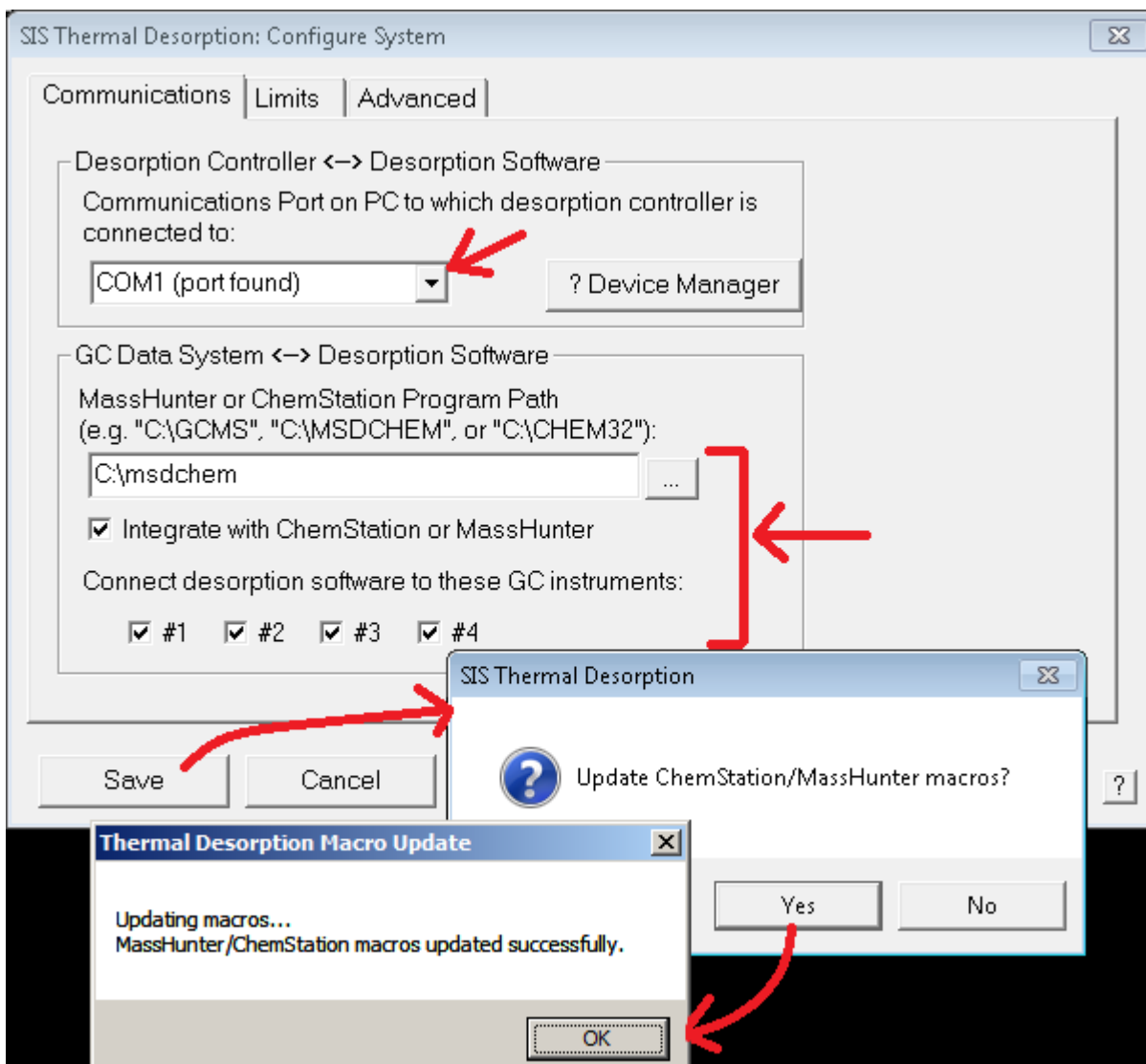


Figure 2.6: Configuring TD and installing macros.

For now you only need to bother with the parameters on the `Communications` tab:

- **Communications Port:** You should specify the serial communications port the TD system is (or will be) connected to. This is typically COM1 but may be some other number.
- **GC Data System integration:** If you want the SIS TD Software to be integrated with your GC data system software (integrated mode is supported on Agilent MassHunter and Agilent ChemStation only), you should select the folder of your GC data system by pressing the `...` button (typically `c:\GCMS`, `c:\MSDCHEM`, `c:\CHEM32`, or `c:\HPCHEM`). Also select the `Integrate with MassHunter or ChemStation` check box to enable the integration and select the MassHunter/ChemStation GC instrument numbers which will use the TD. If you are not integrating, leave all these fields blank and unchecked.

Technical details on the configuration options are described in *Configuration Window* (page 36). If unsure about these options, you can always change them later later via the `System > Configure...` menu in the SIS TD Software (or `Configure` program in the SIS Thermal Desorption program group on the Windows Start menu).

Click `Save`.

If prompted to Update MassHunter/ChemStation macros? (to enable integration), choose Yes, and it should say MassHunter/ChemStation macros updated successfully. Further details on the modifications made to MassHunter/ChemStation to support integration are in *ChemStation/MassHunter Modifications* (page 69).

2.5 Reinstalling or Upgrading MassHunter/ChemStation

Warning: If you ever reinstall, upgrade, or move MassHunter/ChemStation after installing the TD software, you may need to re-integrate to update any macros that may have been overwritten. This can be done by disabling and re-enabling integration (i.e. from the SIS TD Configuration dialog, disable Integrate, do a Save, enable Integrate, and do a Save again).

2.6 Uninstallation

You may uninstall the SIS TD software at any time from the Windows Control Panel. Details depend on your version of Windows but are roughly as follows. Open the Windows Control Panel by clicking the Windows Start button on the taskbar and then choosing Control Panel or Settings > Control Panel. Then select Programs or Add/Remove Programs button. On the Install/Uninstall tab, right click SIS TD and select Uninstall or Add/Remove. When prompted to confirm file deletion, click Yes.

Note: The above deinstallation will remove the TD program and files. It will also attempt to disable Integration by removing *ChemStation/MassHunter Modifications* (page 69).

2.7 Starting the Thermal Desorption Software

The TD software is by default set to start automatically following the installation and configuration. The software can be started again at any later time from the Windows Start Menu > Programs > SIS Thermal Desorption > SIS Thermal Desorption Program as shown in figure below.

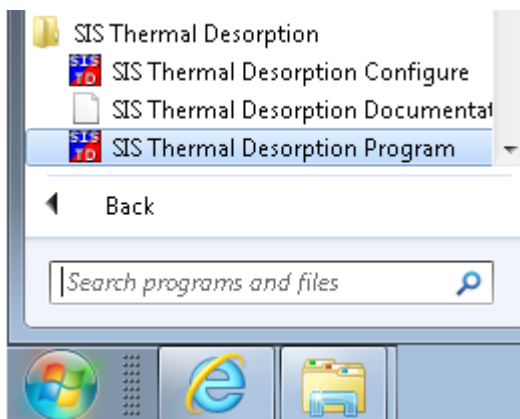


Figure 2.7: Starting the TD software from the Start Menu (Windows 7)

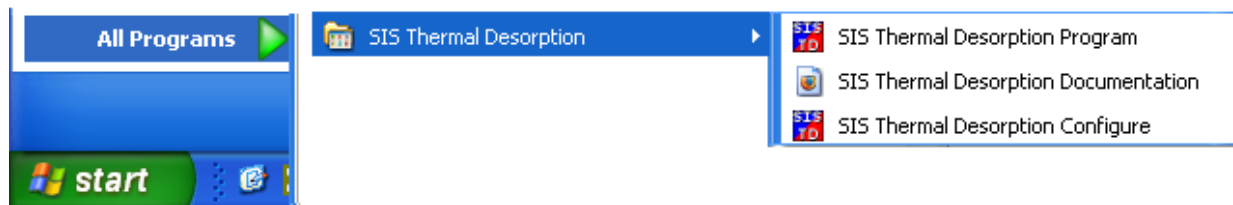


Figure 2.8: Starting the TD software from the Start Menu (Windows XP)

2.8 Validating the TD Software

Check the following things to ensure the TD software is properly set up:

- **Check GC data system integration:** If using integrated mode, ensure integration is working: Make sure that launching the GC data system causes the TD Software to automatically open. Make sure that the title bar of the TD Software displays the currently selected GC method. If this does not happen, check the integration settings on *Configuration Window* (page 36).
- Make sure the TD software communicates with the TD hardware. You should see *Cryo-trap connected*; *TD connected* in the bar at the top of the TD window. The *Status Window* (page 49) will display the TD and cryo-trap temperatures. If the TD system does not communicate, you may need to change the serial communication port settings from the *Configuration Window* (page 36).

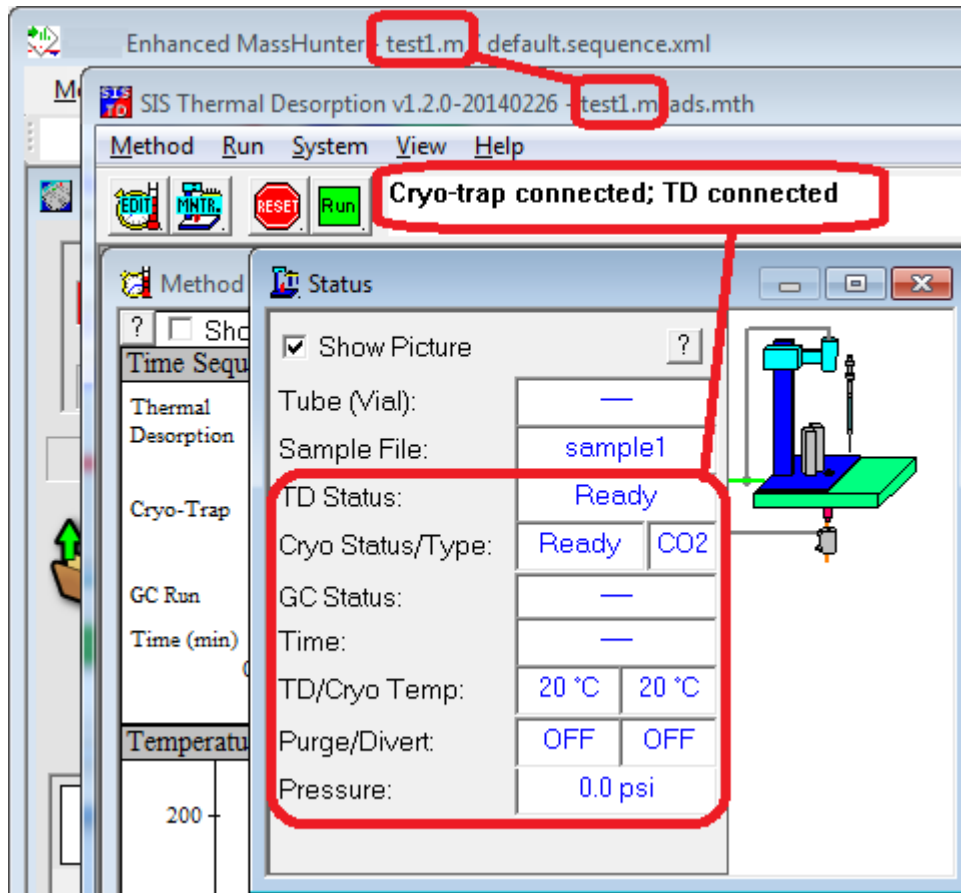


Figure 2.9: TD software successfully communicating with TD hardware (Cryo-trap and TD detected as being connected and reading temperatures and pressures) and with the GC data system (method name synchronized as seen in title bars).

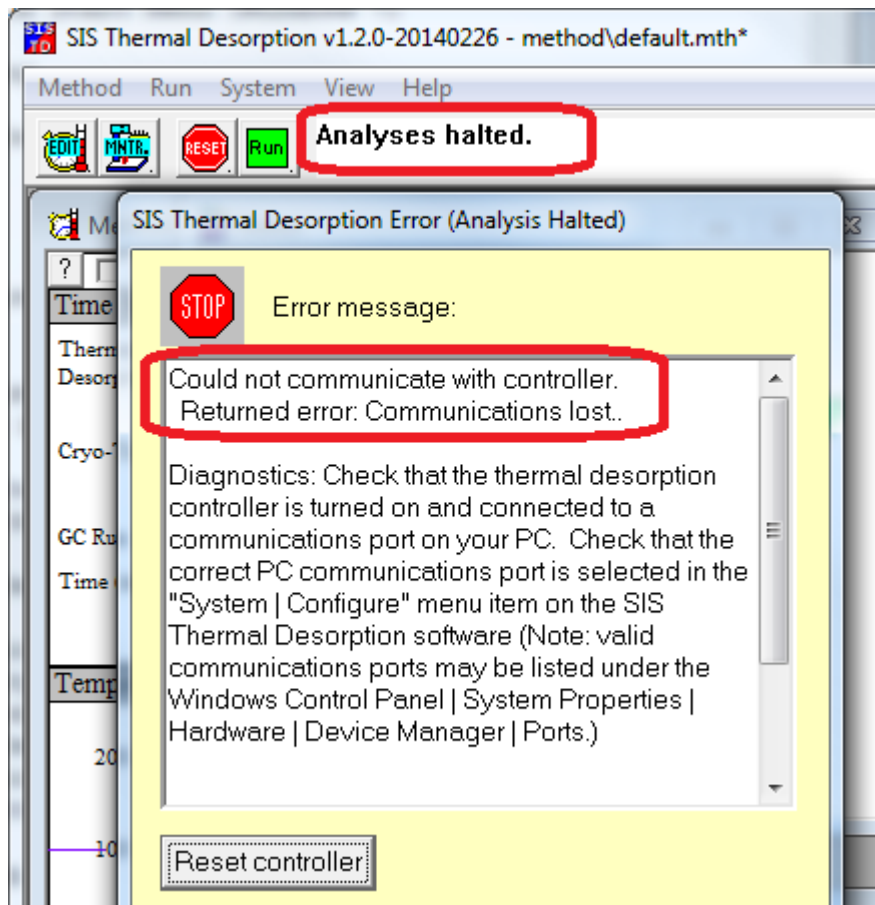


Figure 2.10: TD software not communicating with TD hardware (top bar displaying Analysis halted or taking a long time Reinitializing controller and giving Could not communicate with controller error message).

SOFTWARE OPERATION

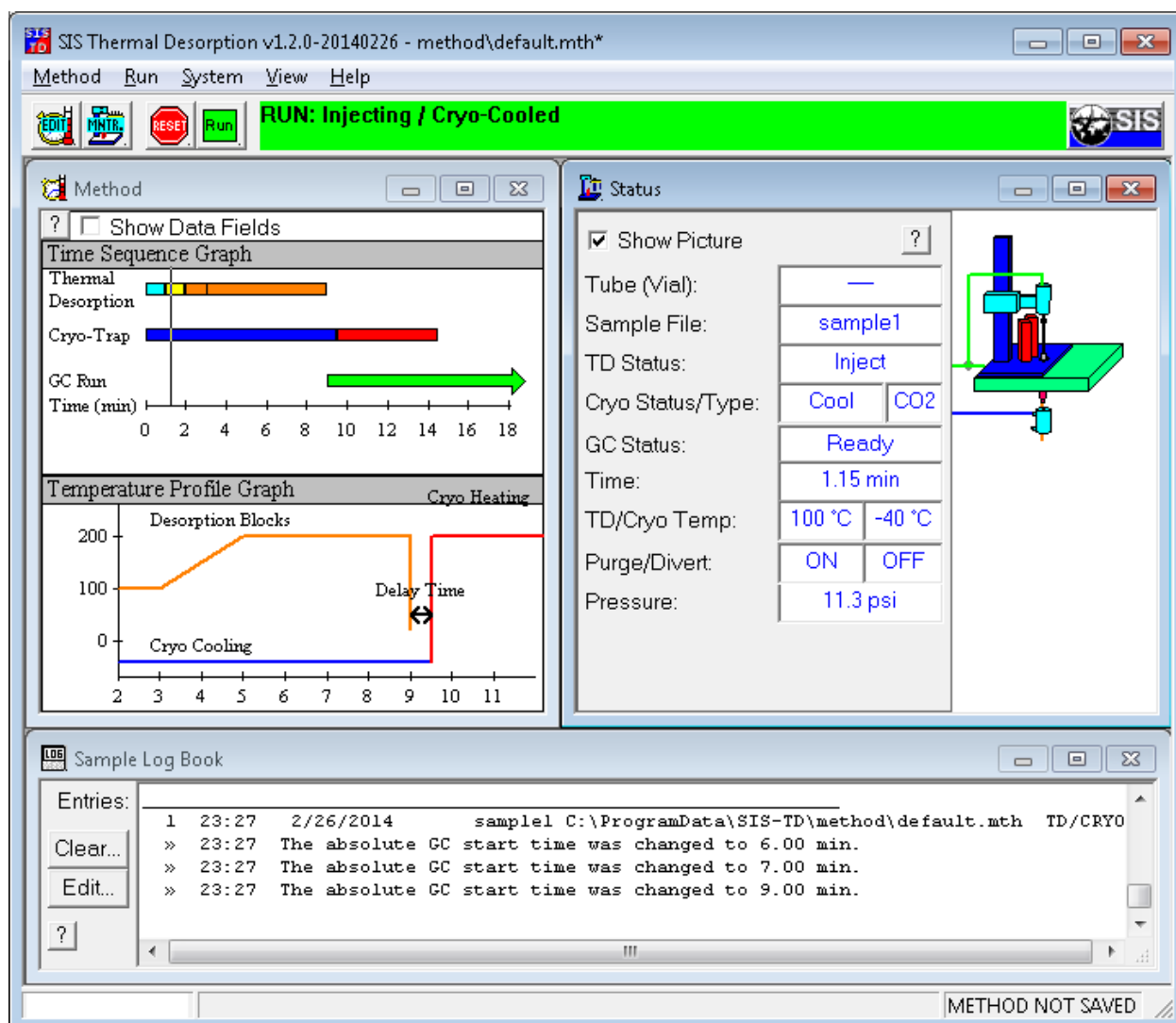


Figure 3.1: SIS Thermal Desorption (TD) Software window.

3.1 Overview

This section summarizes the SIS Thermal Desorption (TD) Software and its use in configuring, running, and monitoring the TD unit. See *Software Introduction* (page 7) for a background on the TD Software. More detail is provided later in *GUI Windows* (page 35).

3.2 Getting Started

Before you begin using the TD system, make sure that it has been properly installed. This pertains not only to the Desorption Unit, Electronics Console and Cryo-Trap, but also to the TD Software. Installation by a technician trained by SIS is recommended, and certain warranty provisions may be void unless the installation is performed by certified personnel. Installation by an authorized agent of SIS is always accompanied by initial training in the use of the system using customer samples when possible. This is the best way to be sure that your system is correctly installed.

At a minimum, verify that carrier gas, compressed air, electrical power, and if applicable, cryogenic fluid have been correctly connected and supplies are adequate. Verify that the Desorption Unit is in place over the GC inlet and that the centering septum nut is present.

It is also recommended to READ THIS MANUAL THOROUGHLY before using the system.

3.3 System Startup

Turn on the power to the Electronics Console and start the TD software. If the TD Software is running in integrated mode (integrated with your GC data system), the TD Software will open automatically when the GC data system is opened. If not, start the TD Software manually as shown in *Software Installation* (page 15). When the TD software is started, it will attempt to communicate with the Electronics Console. Any error messages will be displayed at this time. See *Validating the TD Software* (page 23) to ensure the software is properly working.

Once the system has started and initialized, a method can be created, or samples may be run using a previously stored method.

3.4 Using TD Methods


Parameter settings for one or more TD runs are contained in a TD **method**, which can be saved as a file with extension `.mth`. You can have multiple methods, which can be loaded, saved, and edited as needed using the TD Software.

Furthermore, if the TD Software is used in integrated mode, the TD method will be saved (and linked to) the GC method in your GC data system so that appropriate TD parameters will be loaded automatically when a GC method is loaded in your GC data system.

Creating a TD method is a matter of modifying an existing one to suit the current analysis. A default method is loaded when the TD Software is started in standalone mode or if a GC method without thermal desorption settings is loaded in integrated mode.

3.4.1 Method Edit View

The TD method settings can be edited from the Method window, which is accessible from the View > Method

Edit View menu item or the  button on the toolbar.

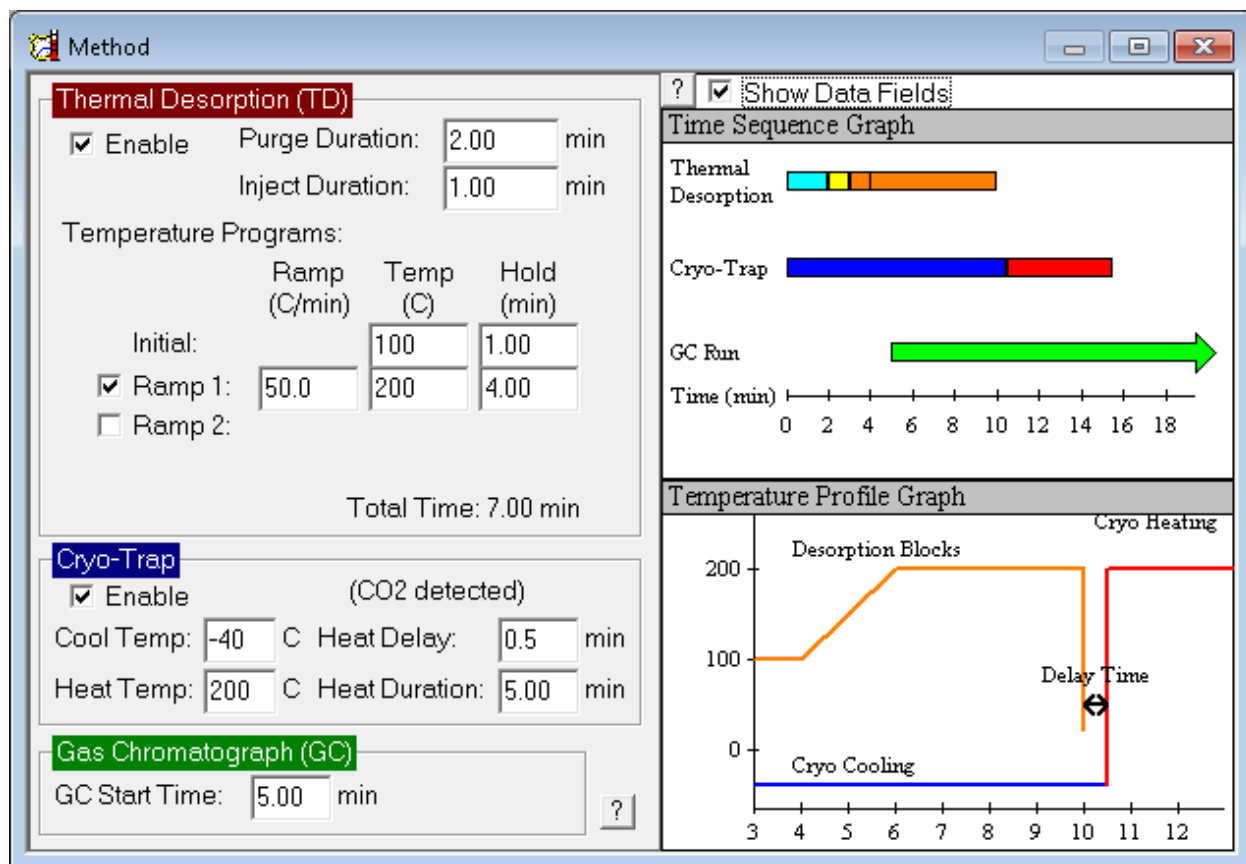


Figure 3.2: TD Method window

The main parameters for the TD are the Purge, Inject, and Desorb times and the temperature settings for the desorption heater and cryo-trap. Other parameters include the GC start time and Cryo-Trap heat delay and duration. These parameters are described in detail in *Method Window* (page 46).


3.5 Saving settings

When modifying an TD method, it is important to remember to save the changed settings by selecting `Method > Save Method` or `Method > Save Method As` from the menu bar or (in integrated mode) by saving the entire method from the GC data system. If the setting changes are not saved, the prior settings will be restored the next time the method is loaded. As a reminder, the text `METHOD NOT SAVED` appears in the lower right-hand corner of the TD Software, as well as an asterisk (*) in the title bar, whenever a setting change is made but not yet saved. Setting changes can be made at any time, even in the middle of a run. Although not recommended for normal operation, this flexibility can assist in method development. Any changes that are made during a run are recorded in the *Sample Log Book* (page 51); however, changes must be saved if successive runs in a sequence are to use the new settings.

Importing settings In integrated mode, it can be useful to import TD settings from one GC method into another. This is made possible by the `Method > Import Method...` menu item.

3.6 Running a Single Sample

Once GC and TD methods have been defined, a sample may be run from the data system.

In standalone mode, get the GC into a ready state and then in the TD Software select the Run > Run Sample... menu item or click the  button, and then click Start Run.

In integrated mode using MassHunter/ChemStation, the following procedure is used. From the GC data system Instrument Control or Run Control window, select Method > Run (Method) to activate the Start Run window. Edit sample information and click the Run Method button in the Start Run window. Details will vary depending on the version of your GC data system. The entire data system method, including TD settings, will be executed when the GC becomes ready.

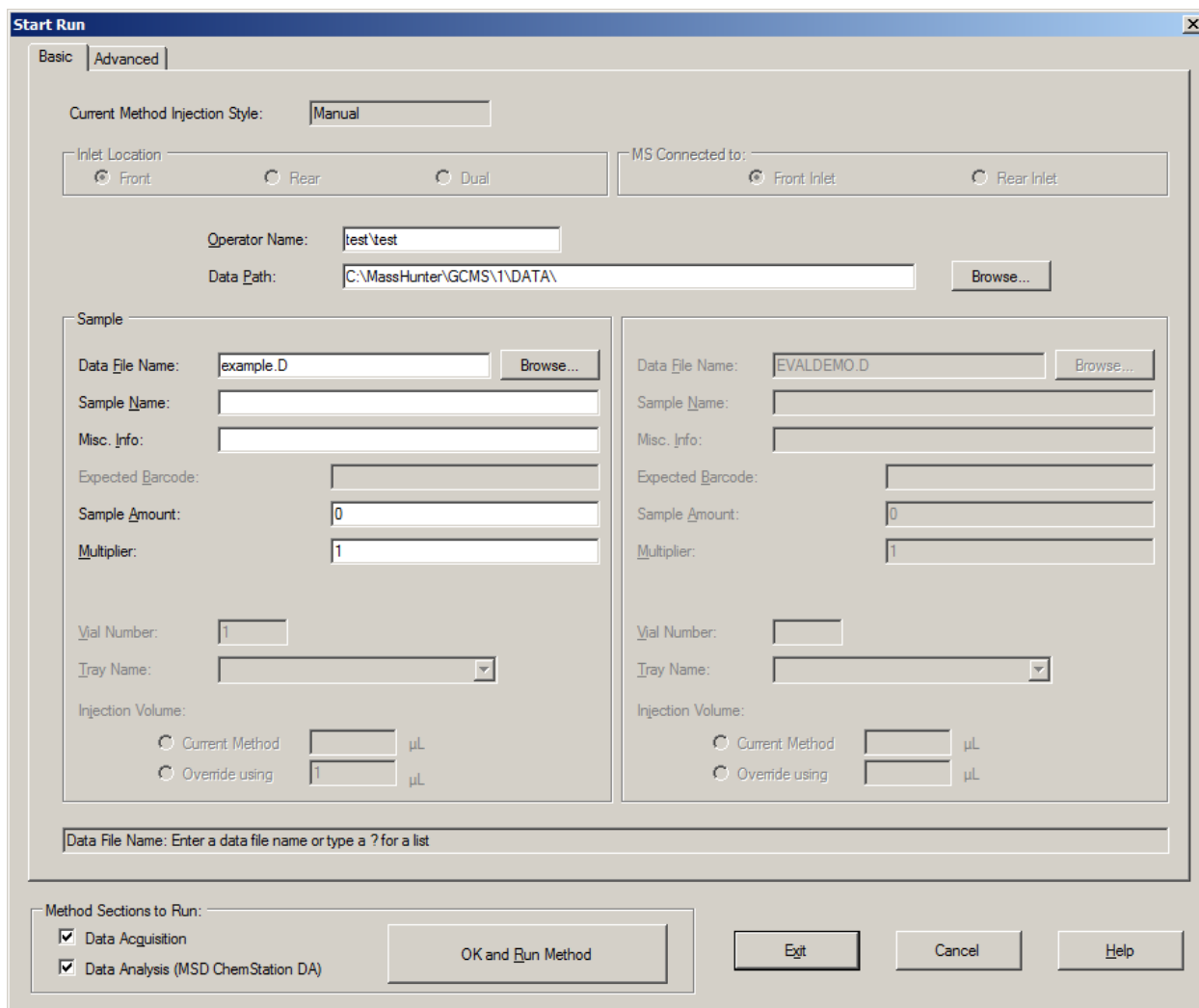



Figure 3.3: Method from older ChemStation.

Figure 3.4: Run Method from MassHunter

Run monitoring view: It can be convenient to monitor the run using the Run Monitoring View, accessible from the

View > Run Monitoring View menu (or  button). This shows the *Status Window* (page 49), temperature profiles, and *Sample Log Book* (page 51).

Terminating a run: If for any reason the sample must be aborted or stopped during the run, do so by selecting the Run

> Reset Controller... menu item of clicking the  button on the toolbar. The TD Ssoftware contains error handling protocols that will assure that the GC oven temperature program is run if there is an error following the desorption blocks having been closed. Stopping the GC run from ChemStation may result in desorbed analytes remaining on the column into the next run.

3.7 Running a Sequence of Samples (AutoDesorb)

The AutoDesorb supports running up to 12 samples unattended.

In standalone mode, you can use the *Sequence Window* (page 55) in the TD software. (example: *Thermo Xcalibur Usage* (page 61)).

When integrated with MassHunter/ChemStation, the sequence table in the GC data system is used to control the entire sequence. Using MassHunter or ChemStation, perform the following steps (details may vary slightly depending on the version of your GC data system):

1. From the top MassHunter or ChemStation window, select Sequence > Edit (Sequence) or Sequence > Edit Sample Log Table from the menu bar.
2. Enter all the sample information as you would for liquid samples, including vial numbers (carousel positions), data file name, method and comments.
3. Click OK and return to the Top window.
4. Select Sequence > Save (Sequence) from the menu bar, and name the sequence file.
5. Select Sequence > Run (Sequence) from the menu bar.

The sequence will then proceed as normal.

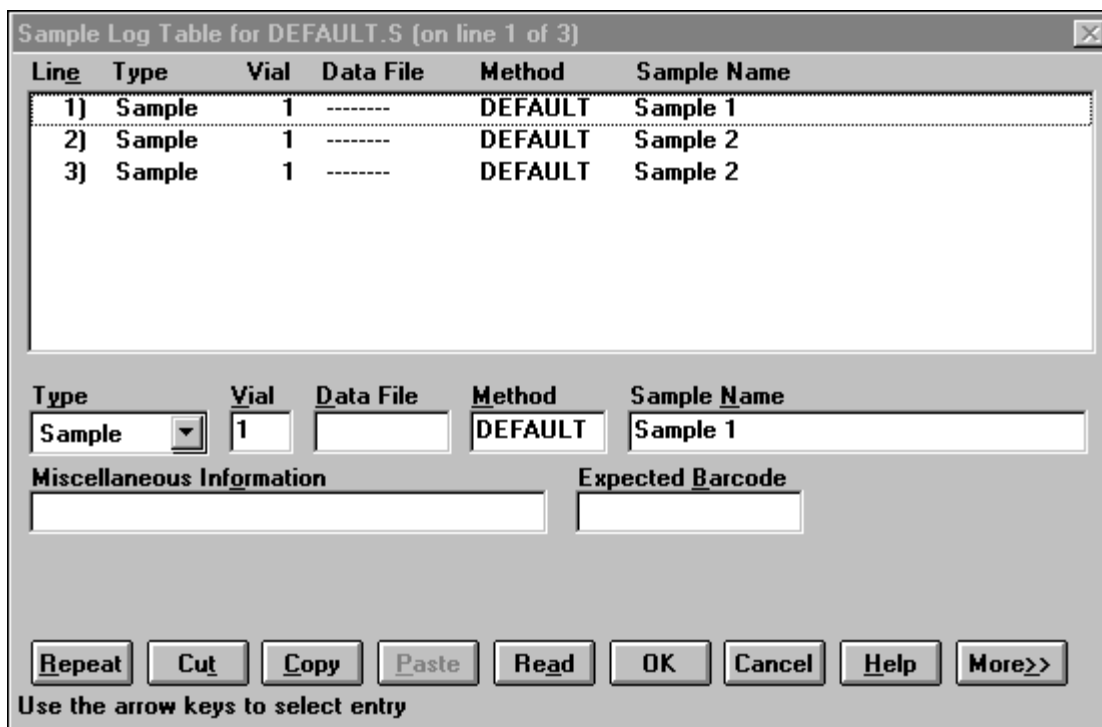



Figure 3.5: Running a sequence from ChemStation.

Caution: You may notice that the TD Software provides a *Sequence Window* (page 55) of its own (Run > Sequence menu). **This is not used** when operated in integrated mode. This sequence table is provided for situations where integrated mode cannot be used (e.g. non-Agilent GC data systems).

NOTE: Samples need not be run in numerical order and may even be run multiple times or with different methods. Sequences may have as many lines as necessary and are not restricted to the number of tube positions on the carousel. Each Vial Number entry, however, must correspond to a position on the carousel, and values must therefore be between 1 and 12. Tubes may be loaded and unloaded during the sequence whenever the door on the desorption unit is unlocked.

If the sample or sequence must be stopped prematurely, do so by clicking the  button on the TD software.

Depending on the desorption system state at the time the controller is reset, the choice may be given to retry or skip the sample. Check the *Sample Log Book* (page 51) to see whether the tube may be re-analyzed or if the sample has been compromised by going through an incomplete desorption cycle. If the entire sequence is to be aborted, that should be done through the data system before responding to the Skip/Retry request from the TD Software.

GUI WINDOWS

This is a description of each window and field in the GUI in more detail. See *Software Operation* (page 27) for a summary of the GUI.

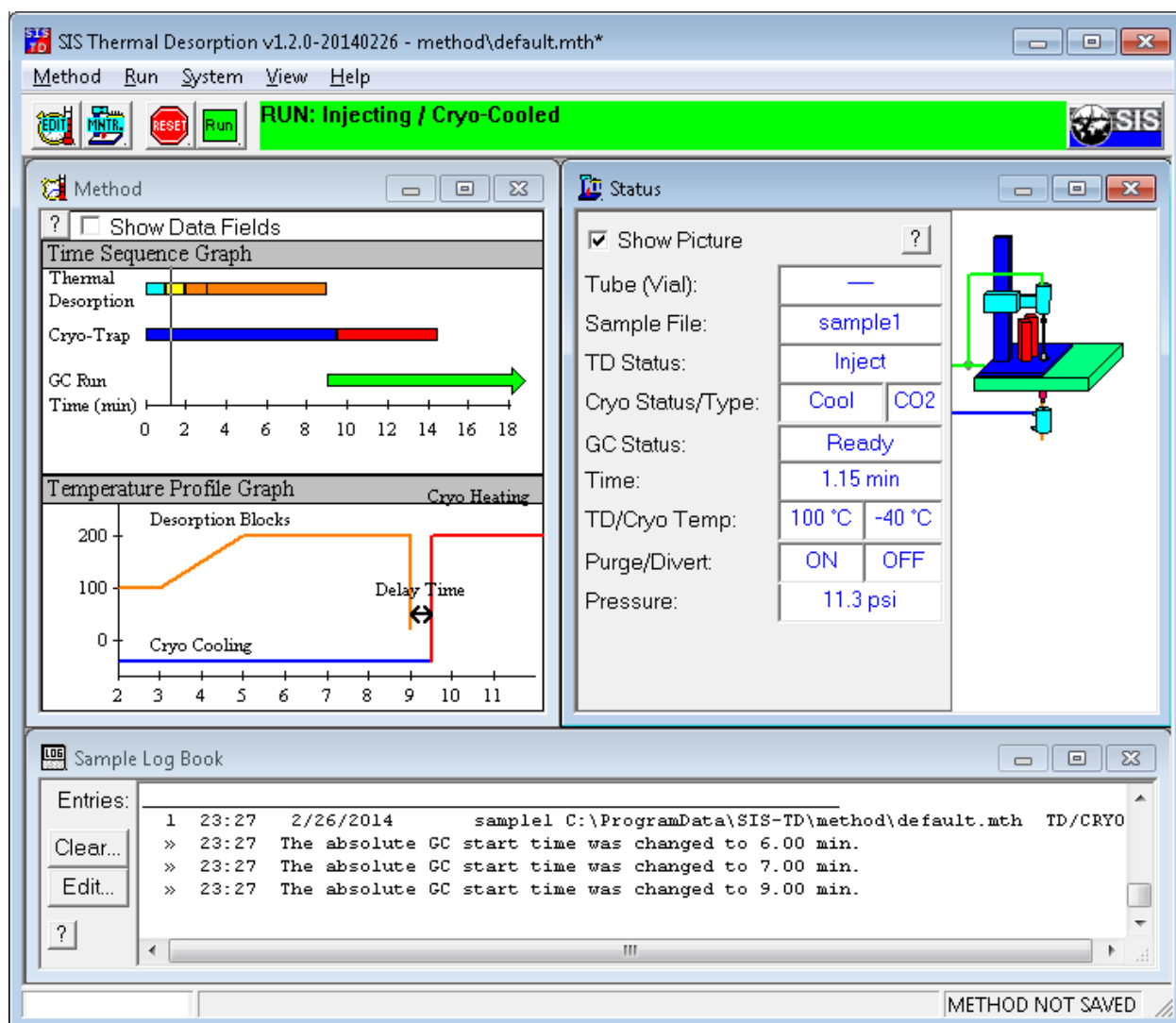


Figure 4.1: SIS Thermal Desorption Software main window.

4.1 Configuration Window

This dialog box is for configuring the thermal desorption system, such as communication ports, system limits, and debugging options. Changes are global: settings here affect all methods.

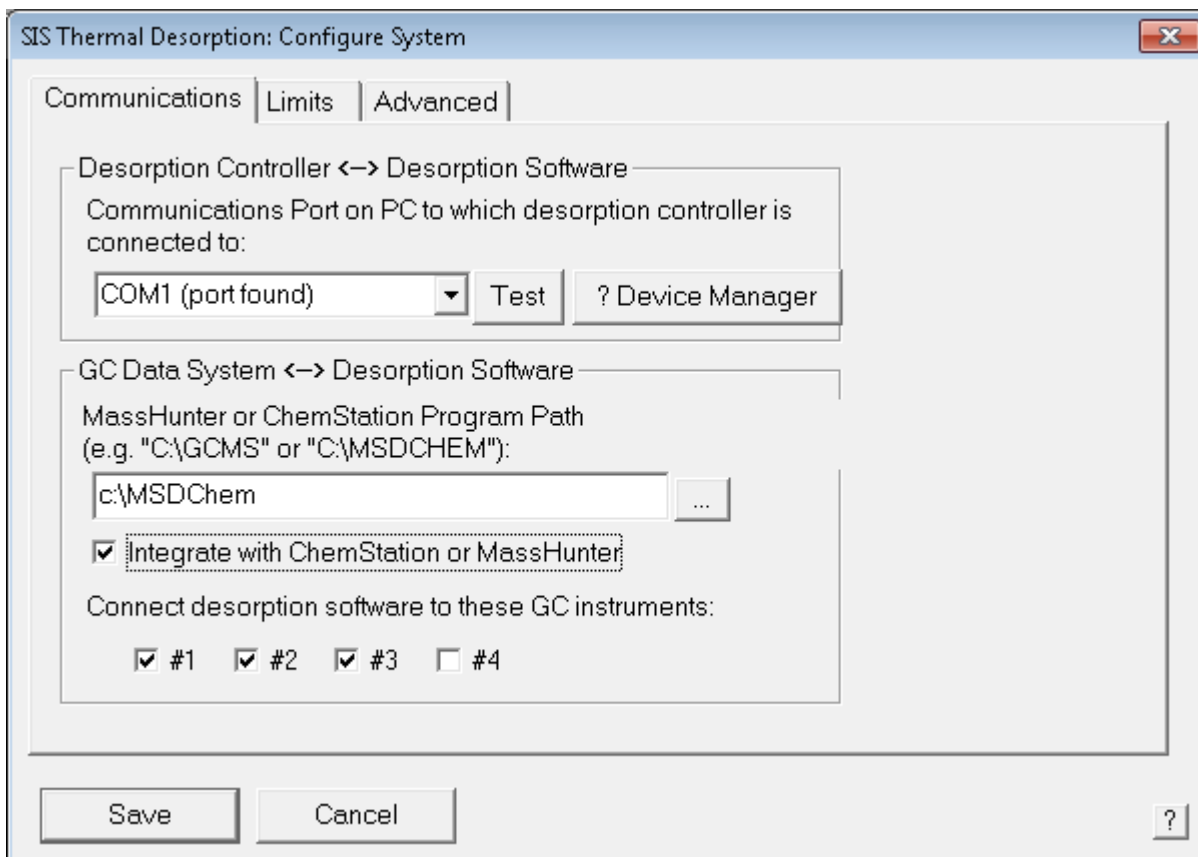


Figure 4.2: Communication settings.

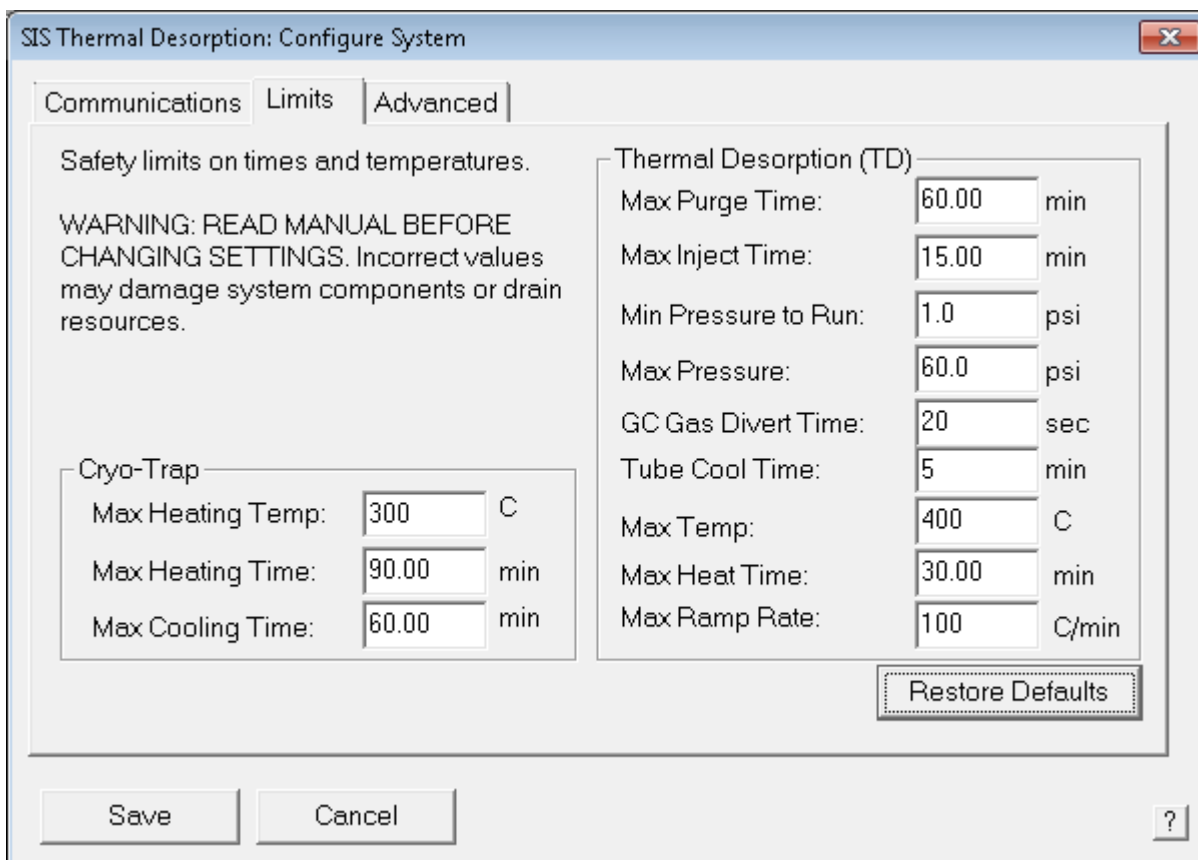


Figure 4.3: System limits.

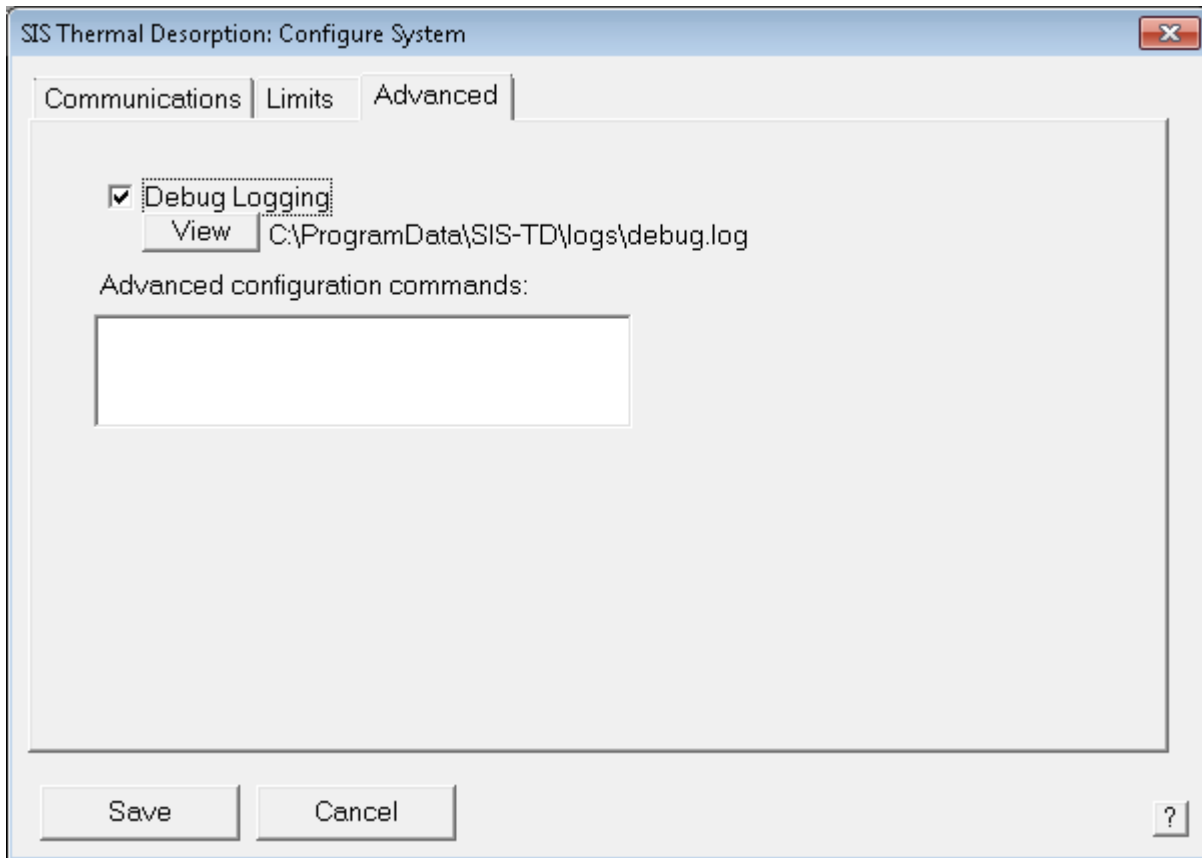



Figure 4.4: Advanced configuration settings.

4.1.1 Communications Parameters Tab

This tab configures the communication between the TD software, TD hardware, and GC data system software.

Communications Port

This is the name of your the serial communications port on your PC to which the thermal desorption controller is connected to. Typically this is COM1 or COM2 but may be higher for USB ports. The port number may be labeled on the back of your computer. You need only try ports that are marked with (port found), which indicates that the port was detected on the system (but says nothing about whether the TD is plugged into or connected to that port). A list of valid communications ports can also be found in the Ports section of the Windows Device Manager in the Windows System Control Panel (when can be opened by clicking the Device Manager button). If not sure, try selecting COM1, COM2, and maybe a higher port number and see if the software communicates with the controller

by pressing the  button or the Test button to try to reinitialize the controller using the port number selected.

[[Note: The SIMULATOR option is intended strictly for debugging purposes and should not normally be selected. It will simulate the TD controller hardware in software, thereby allowing the software to be operated without any actual TD controller hardware actually connected to your PC.]]



Figure 4.5: Serial ports on TD-5 (left) and PC (right). Connect serial cable (middle) between them. Your ports and cables may look slightly different.



Figure 4.6: Optional serial-to-USB converter cable (top) can connect TD controller into USB port of PC and RS232 port of TD controller (bottom).



Figure 4.7: Optional serial-to-USB converter cable can be extended if needed with a serial serial cable.

The Windows System Control Panel Device Manager Ports can be helpful for displaying and viewing the serial (RS232) communications ports available on your system. This can be conveniently accessed from the Device Manager button on the SIS TD software Configure window or from the Windows Start menu as shown below.

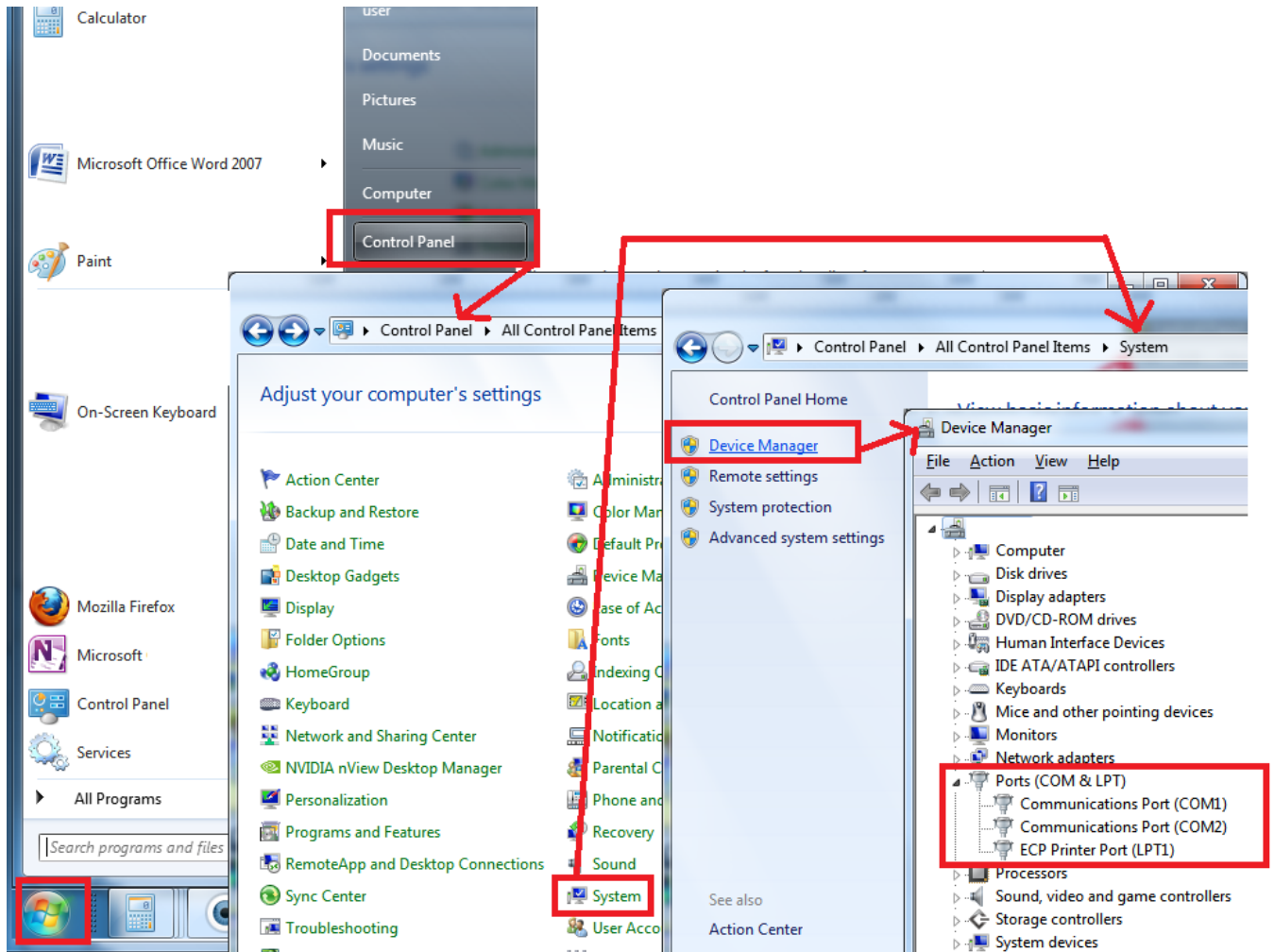


Figure 4.8: Windows System Control Panel Device Manager Ports (Windows 7)

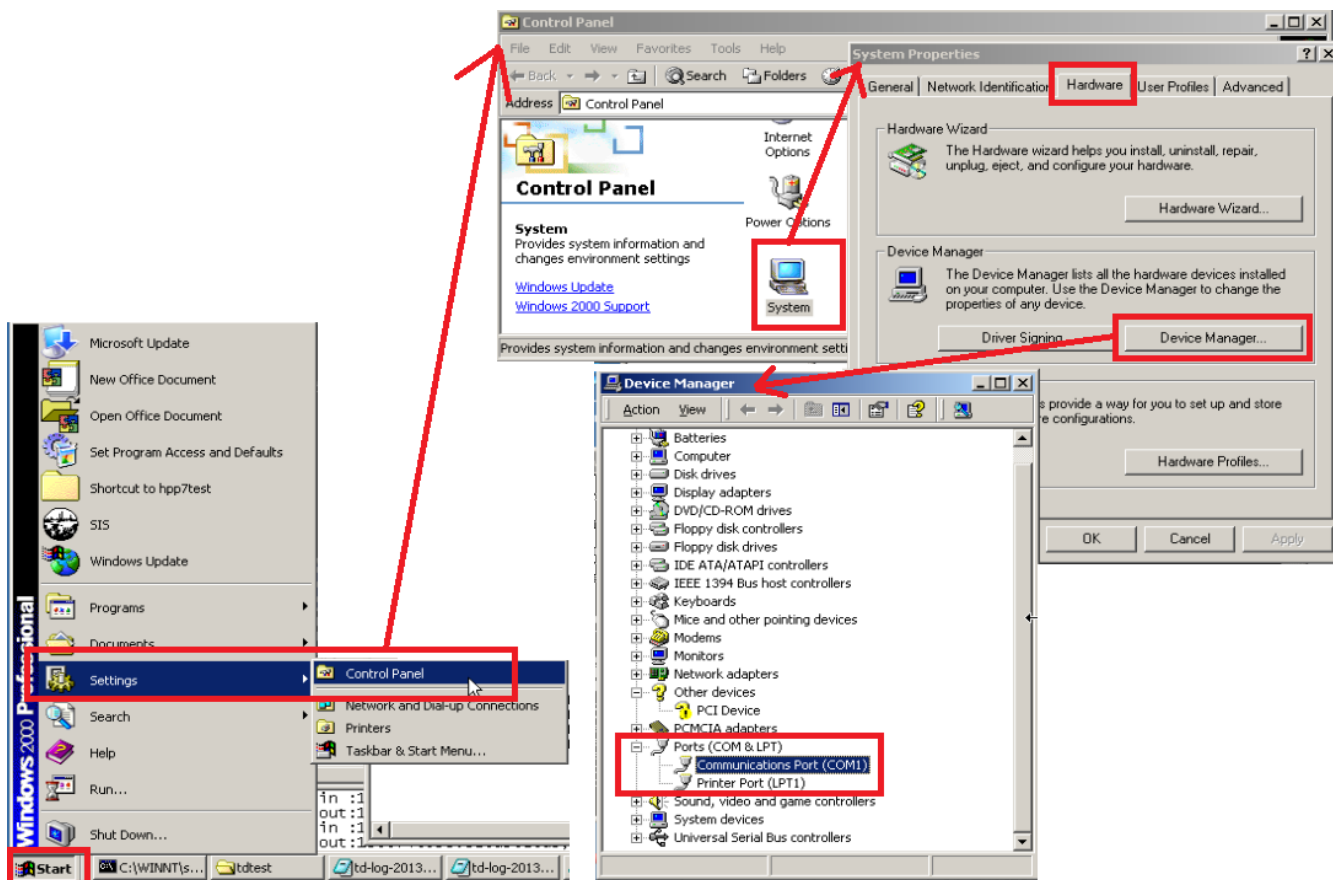


Figure 4.9: Windows System Control Panel Device Manager Ports (Windows 2000)

MassHunter or ChemStation Program Path

This is the program folder for your Agilent MassHunter or Agilent ChemStation data system. You can leave this field blank if you are not integrating the SIS Thermal Desorption Software with your GC data system software (i.e. standalone mode). It is typically `c:\GCMS` (for MassHunter), `c:\MSDCHEM` (for newer MS ChemStations), `c:\CHEM32` (for newer GC ChemStations), or `c:\HPCHEM` (for older ChemStations). Note: this folder would typically contain a subfolder named `msexec` (for MS ChemStation and MassHunter) or `core` (for GC ChemStation).

The Thermal Desorption software needs to know this folder in order to install custom macros into your GC data system to allow the SIS Thermal Desorption Software and GC data system to integrate, as described in *ChemStation/MassHunter Modifications* (page 69).

Integrate with MassHunter or ChemStation

Check this box if you want to integrate the SIS Thermal Desorption Software with your GC data system (integrated mode) by installing macros in the latter. Uncheck this box to disable integration.

Macros will be installed or uninstalled when you click *Save*.

Connect desorption software to these GC instruments

MassHunter and ChemStation can control up to four GC or other instruments at a time. Select which instrument numbers on which thermal desorption should be enabled. If checked, the SIS Thermal Desorption Software will automatically launch when you launch that instrument number and respond to events like loading/saving methods or starting a run from your GC data system.

4.1.2 Limits Parameters Tab

This tab controls various limits on things like temperatures and times, typically for safety reasons. You should not normally change these.

Cryo-Trap Max Heating Temp (C)

The maximum cryo-trap heating temperature that can be specified in the method. The actual cryo-trap temperature may be allowed to overshoot above this value during a run but never outside the hard limits imposed by the controller itself. The default is 300 C and maximum is 400 C.

Cryo-Trap Max Heating Time (min)

The maximum time duration of cryo-trap heating that can be specified in the method. This may help prevent damage to the cryo-trap or column. The default is 90 min.

Cryo-Trap Max Cooling Time (min)

The maximum time duration of cryo-trap cooling that can be specified in the method. This may prevent unnecessary draining of the cooling gas. The default is 60 min.

TD Max Purge Time (min)

The maximum time duration of purging that can be specified in the method. This may prevent unnecessary draining of the carrier gas. The default is 60 min.

TD Max Inject Time (min)

The maximum time duration of injection that can be specified in the method. This may prevent unnecessary draining of the carrier gas. The default is 15 min.

TD Min Pressure to Run (psi)

The minimum pressure that must be observed at the end of the inject step in order for the run to proceed. The run will be skipped if this pressure is not met. Failure to reach pressure can indicate a leak (e.g. connections on the sample tube not tight). The default is 1.0 psi (and maximum is 75 psi), but you may need to reduce this in some situations.

TD Max Pressure (psi)

The maximum carrier gas pressure allowed to be observed inside the thermal desorption system. Exceeding this can indicate a plug in a line. The system will be shutdown for safety if this value is exceeded. The default is 60 psi and maximum is 75 psi.

TD GC Gas Divert Time (sec)

The time duration after the start of the injection in which to turn on the GC divert value. The GC divert valve cuts off the carrier gas to the GC and sends all carrier gas through the thermal desorption tower. The default is 20 sec and maximum is 100 sec. Note: if the inject duration in your method is shorter than the GC divert time, then the carrier gas will not divert. This is by design and can be useful in some situations.

TD Tube Cool Time (min)

This is the time duration that tube will be cooled (with purge gas flowing through it) after the desorption. This time is intended as a safety measure to prevent the operator from getting burned by touching a hot sample tube. The default is 5.0 min.

TD Max Temp (C)

This is the maximum desorption block temperature that can be specified in the method. The actual temperature may be allowed to overshoot above this during a run but never outside the hard limits imposed by the controller itself. This may help prevent damage to the desorption blocks/PRT or other overheating problems. The default is 400 C and maximum is 450 C.

TD Max Heat Time (min)

This is the maximum time duration of desorption block heating that can be specified in the method. This may help prevent damage to the desorption blocks/PRT or other overheating problems. The default is 30 min.

TD Max Ramp Rate (C/min)

This is the maximum ramp rate than can be specified in the method. The default is 100 C/min, which is approximately the maximum ramp rate that is physically possible. You shouldn't need to change this.

Restore Defaults

This button restores the limits to default settings.

4.1.3 Advanced Parameters Tab

This tab defines various other settings.

Debug Logging

If checked, this enables logging of communications messages between the PC, GC data system, and the thermal desorption controller. This is intended for debugging in the case of a problem. It may be enabled by default on new installations. You can click the `View` button to view this log in real-time (and optionally then click `Log Folder` to access the folder where this log file (`debug.log`) is stored, such as to e-mail this file to SIS for analysis).

Advanced configuration commands

Here is specified a semi-colon-delimited list of configuration commands to execute each time the thermal desorption controller is reset (which is included every time a new run is started). This is an advanced option, generally only used when directed by SIS to tune a system (e.g. modify temperature control characteristics). By default, this field is blank.

4.2 Method Window

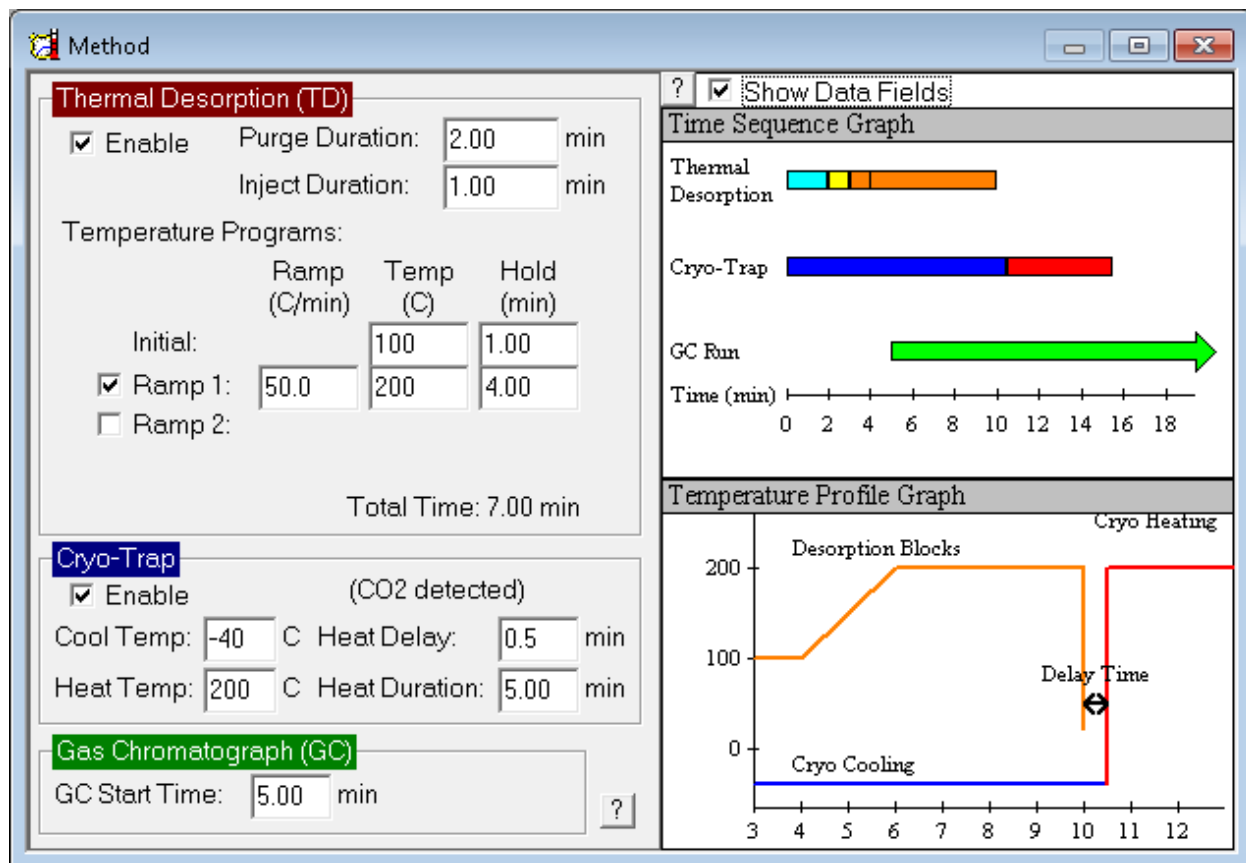



Figure 4.10: Method Window

The thermal desorption Method window (figure above) enables the user to view and edit parameters on the currently open TD method. The currently open method can be selected from the `Method > Open Method...` or `Method > Save Method...` menu items or from the GC data system (e.g. ChemStation/MassHunter integrated mode). The method is typically edited before a run but can also be interactively edited during a run (can be useful for method development). The method times and temperatures are displayed graphically on the right side of the window, and time bars and temperature traces will be plotted here during the run.

This window is accessed by selecting the `View > Method Edit View` menu item or clicking the .

4.2.1 Description of Each Parameter

TD Enable and Cryo-Trap Enable

The thermal desorber (TD) and the cryo-trap can be independently enabled or disabled in the method by checking/unchecking the `Enable` check boxes in the method. Therefore, the combinations are possible:

- TD enabled and cryo-trapping enabled (TD with cryo-trapping)
- TD enabled and cryo-trapping disabled (TD without cryo-trapping)
- Cryo-trapping enabled and TD disabled (cryo-trap run)

- Cryo-trapping disabled and TD disabled (GC only run)

An example of a method that would use TD without the cryo-trap is the thermal extraction of high-boiling components from a soil sample (e.g. PCB's or Polynuclear Aromatic Hydrocarbons). In this case, materials that would be focused on the column cryogenically might only interfere with the analysis. Likewise, the cryo-trap may be used independently of the TD for focusing static headspace injections.

Purge Duration (min)

This is the duration of time in which gas is purged across the desorption tube before the needle is lowered into the GC inlet. This purge allows for a volume of carrier gas to remove oxygen, excess water, or other unwanted volatile materials that may be resident in the tube. The default setting for the purge gas time is **one minute**. Note that the retention of some analytes may be affected by this purge, and the use of a more appropriate trapping resin may be indicated if sample is lost due to this small volume. Purge gas flow is regulated by a mass flow controller mounted on the front or top of the desorption unit. The flow should be adjusted to provide adequate carrier to sustain the total flow for the highest split to be used. The setting is best made by adjusting the flow controller during the Inject period, after the carrier has been diverted (see below).

Inject Duration (min)

This is the duration in time of the injection stage. The inject stage allows for pressure equilibration. The inject stage begins when the needle is lowered into the GC inlet and ends when desorption heating begins. A drop in inlet pressure is normal as the septum is punctured; however, re-pressurization should follow rapidly as the desorption purge flow and normal GC carrier are both directed into the inlet. The dual flow lasts for a preset time after which the carrier gas regulated by the GC's pressure control feature is diverted to pass through the desorption unit. The default value is 20 seconds (0.3 minutes) for the dual flow period but is changeable from GC Gas Divert Time (sec) setting in the System > Configure... > Limits menu. In this way, the pressure and flow control are handled by the GC for maximum consistency. Although an inject time setting of one minute is supplied in the default method, it should be set in conjunction with the Purge Gas flow to allow the injection port pressure to equilibrate and the proper split flow to be reached before the time expires. At least once for each method, it is advisable to check the split flow after the carrier gas has diverted, and adjust the time if necessary (see below figure). At the end of the Inject stage, a pressure reading from the desorption unit is compared to the Minimum Pressure to Run setpoint in System > Configure... > Limits menu selection. If the minimum pressure is not met a leak is assumed (for the AutoDesorb, the tube is returned to the carousel, and the sequence advanced to the next sample).

WARNING: SPLITLESS INJECTION IS NOT RECOMMENDED. The low flow rate associated with most splitless injections does not provide an efficient transfer of material from the desorption tube to the column. Most chromatographs will yield inconsistent results with splitless injection due to difficulty regulating the inlet flow through the desorption unit in this mode.

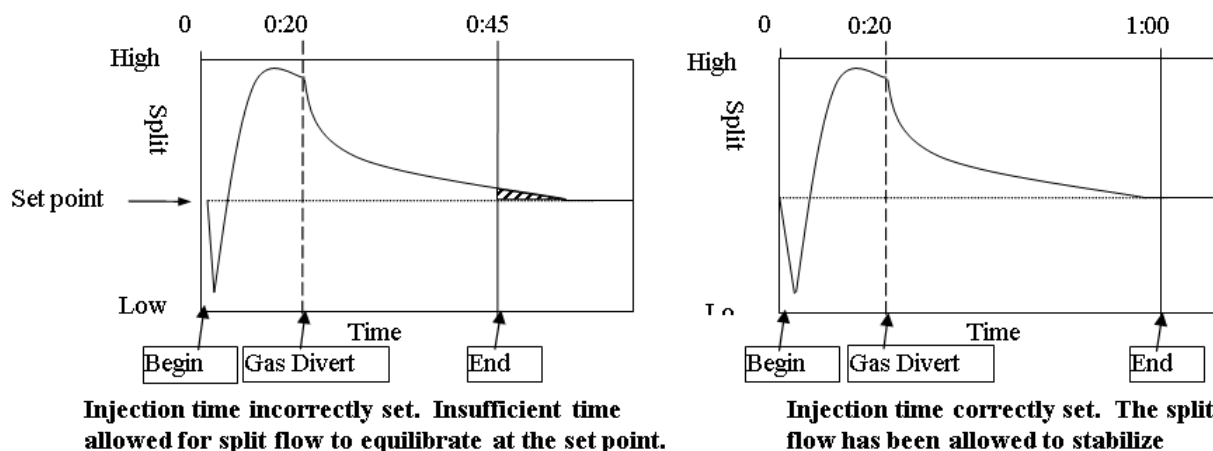


Figure 4.11: Setting the Inject time parameter.

Desorption Total Time (min)

When the Inject stage ends, the heater blocks close around the desorption tube, heat up, and remain closed for the time duration specified here. The total Desorb duration cannot be edited directly but rather is calculated automatically from the temperature ramp rates and hold times specified in the Temperature Programs. The value supplied in the default method is five minutes.

Desorption Temperature Programs (Ramp/Temp/Hold)

This specifies the temperatures, times, and ramp rates for the desorption process (sample heating). For isothermal desorption (recommended for most adsorbent trap methods) the only entries necessary are the initial temperature (C) and desorption duration (min). For ramped desorption (recommended for Direct Thermal Extraction) one or more segments of the temperature program are selected for use by checking the box next to the segment label (Ramp 1, Ramp 2, and Ramp 3). When selected, heating rate (C/min), target temperature (C) and hold time (min) for each segment may be entered. The maximum controlled heating rate is 100 C/min. A heating rate value of 0C will result in the ballistic heating of the sample. Total desorption time is calculated automatically.

Cryo Cool Temp (C)

This is the set-point temperature for the cryo-trap during the cryo-trap cooling stage. The cryo-trap is in the cooling stage throughout the purge, inject, desorb and cryo heat delay stages of the thermal desorption. cryo-trap cooling temperature may be set between roughly ambient temperature and -70 C for liquid CO₂ use or between ambient and -180 C for liquid nitrogen. Cooling temperature should be set below the freezing point of the most volatile compound being analyzed. When using liquid CO₂, trapping efficiency may be enhanced by using thicker film guard columns. When using liquid nitrogen, trapping temperatures often go below the glass transition point of the polysiloxane bonded phases (~ -60 to -70 C). Therefore the use of a bonded phase offers no advantage in terms of trapping efficiency and may actually be detrimental to the column due to the rapid temperature changes. Deactivated fused silica guard columns are recommended for use with liquid nitrogen. For either liquid nitrogen or liquid CO₂, the use of a wide bore capillary guard column will increase the trapping capacity and minimize the chance of an ice plug forming in the trap.

Cryo Heat Temp (C)

This is the set-point temperature for the cryo-trap during the cryo-trap heating stage. The cryo-trap goes into the heating stage immediately after the Cryo Heat Delay (see below) on the thermal desorption. The cryo-trap heating temperature should be set slightly higher than the GC inlet. Keeping each successive stage of the chromatographic system hotter than the last helps to keep the system clean and prevent carryover.

Cryo Heat Delay (min)

This is the duration in time from the end of the desorption heating to the start of the cryo-trap heating. This delay provides a short equilibration period after the desorption needle is removed from the inlet. During this time, the cryo-trap is held in cooling mode to prevent pressure fluctuations from affecting chromatography. The default value for the cryo heat delay is 30 seconds. At the end of the delay, the cryo-trap is ballistically heated to release the focused analytes instantaneously, much like a liquid injection.

Cryo Heat Duration (min)

This is the duration in time that the cryo-trap is heated. Most volatile materials should be released in the first few seconds of heating. Keeping the cryo-trap heater on for long durations may shorten its life. The default setting of five minutes is recommended for most analyses.

GC Start Time (min)

This is the time at which the TD system sends a signal to the GC to start the GC run. The time specified here is relative to the beginning of the Purge stage. The GC may be started at any time after the start of the Purge. Normally the GC Start time is set to coincide with the start of the cryo-trap heating by using the sum of the Purge, Inject, Desorb, and Heat Delay times. This provides chromatographic results that most closely match those obtained by liquid injection. Starting the GC early may be useful in method development (particularly when choosing a cryo-trap cooling temperature) since compounds breaking through a cryo-trap that is too warm may go unnoticed unless the data

system has been started. Early GC start times may also be used to take advantage of functions such as inlet pressure programming that are controlled from the GC time base.

4.2.2 General Notes

Changing and saving method parameters: When modifying a thermal desorption method, it is important to remember to save the changed settings by selecting `File > Save Method` from the menu or by saving the entire method from the data system (e.g. ChemStation integration). If the setting changes are not saved, the prior settings will be restored the next time the method is loaded. As a reminder, the text `METHOD NOT SAVED` appears in the lower right-hand corner of the TD software window, and an asterisk (*) displays in the title bar, whenever a method change is made but not yet saved. Method changes can be made at any time, even in the middle of a run. Although not recommended for normal operation, this flexibility can assist in method development. Any changes that are made during a run are recorded in the log book; however, changes must be saved else the original method settings will be reverted on the next run.

Method Import: A TD method can be imported from another method by selecting `File > Import Method` from the menu. Importing a method copies the contents of the imported method over the currently open method. The ability to import methods can reduce the for data entry. For example, you might want to import thermal desorption method settings from another data system method into the current data system method. To preserve the changes to the current method, you must Save Method.

4.3 Status Window

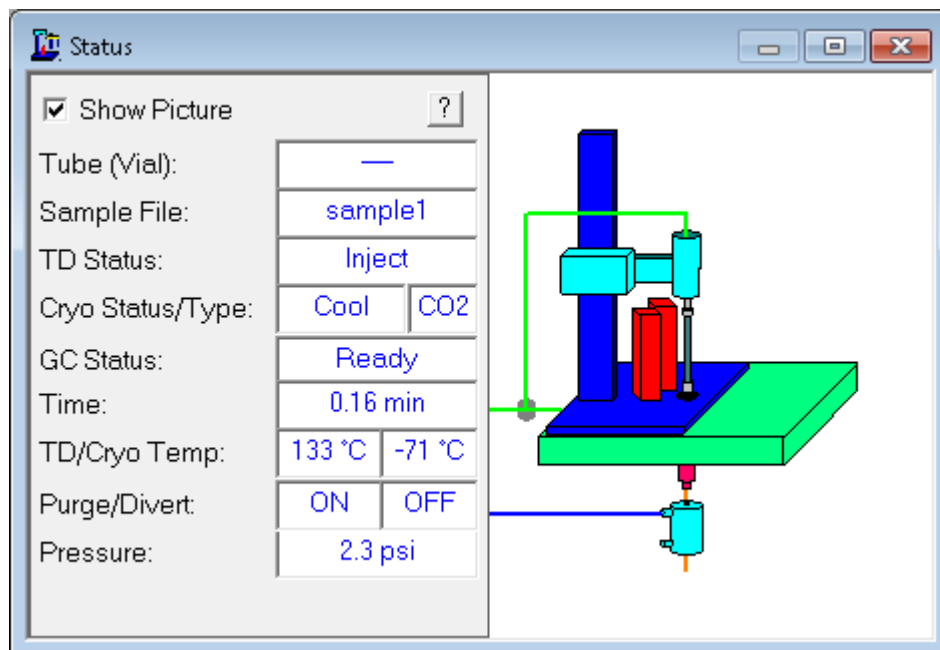



Figure 4.12: Status window

The Status window displays the current status of the thermal desorption system (e.g. current temperature and pressure readings). The window also includes an animated graphical representation of the thermal desorption system on the right.

This window is displayed by selecting the Run Monitoring View (View > Run Monitoring View from the menu or the  button).

4.3.1 Description of Each Field

Tube (View)

(AutoDesorb only) The tube number (1..12) of the current sample loaded by the AutoDesorb autosampler. This field is not displayed on the TD-5.

Sample File

The name of the currently running sample. This identifier is taken either from “sample name” field in the *Run Window* (page 54) or (if integrated with the GC data system, e.g. ChemStation/MassHunter) from the name of the GC data system data file for the current GC run.

TD Status

The current state of the thermal desorption.

Cryo Status

The current state of the cryo trap.

Cryo Gas Type (CO2/LN2)

Indicates whether CO2 or LN2 cooling gas is connected to the cryo-trap. This is detected by the cryo-trap plug on the back of the TD controller.

GC Status

The current state of GC. The GC state is inferred from the GC ready signal and the state of the TD software.

Time (min)

The run time. This is measured from the start of the Purge stage.

TD Temp (C)

The current desorption blocks temperature (feedback reading).

Cryo Temp (C)

The current cryo trap temperature (feedback reading).

Purge (ON/OFF)

Indicates whether the purge gas is on or off.

Divert (ON/OFF)

Indicates whether the GC divert valve is on or off. The divert valve diverts carrier gas from the GC and entirely through the thermal desorption system.

Pressure (psi)

The carrier gas pressure through the desorption system.

Graphical Window

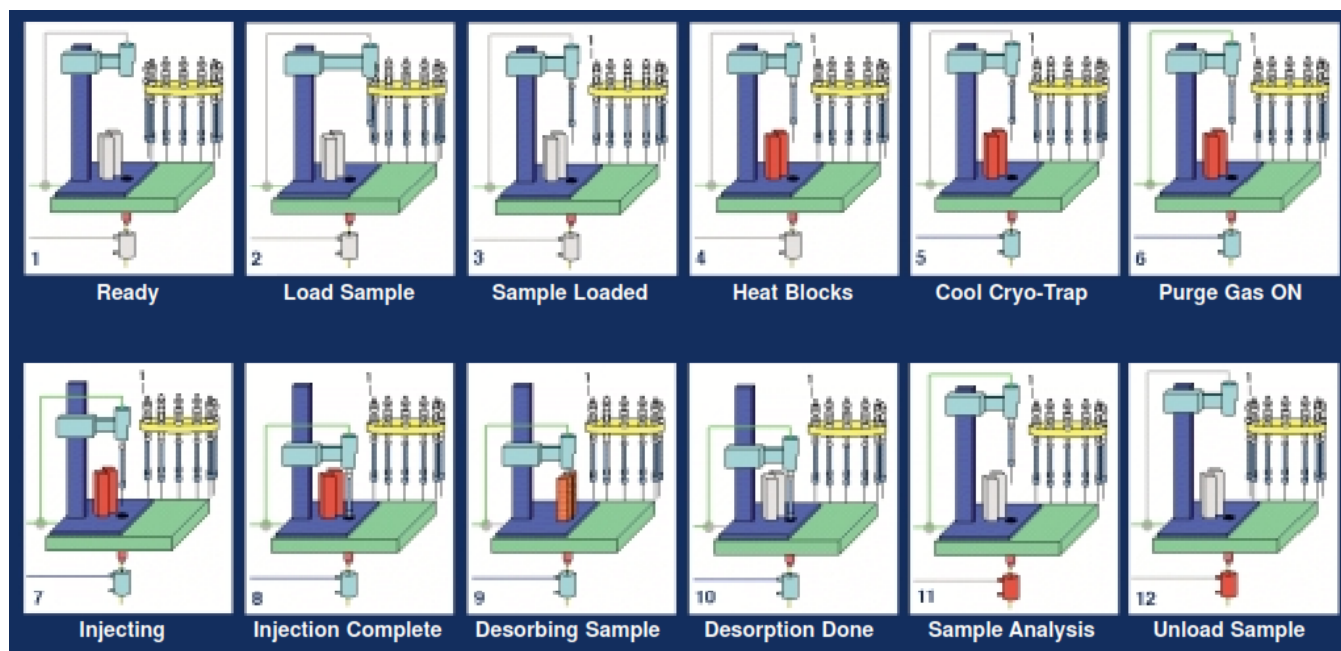


Figure 4.13: Graphical display of TD status.

The graphical display will show a picture of the TD operation. The above picture shows the typical states for an AutoDesorb 2000 (the TD-5 is similar but without loading tubes from the carousel table).

The purge and carrier gas will display as green in the upper left. Cryo-trap and desorb block heating and cooling will display as red and blue respectively. The tube arm will move and blocks will close and open.

4.4 Sample Log Book

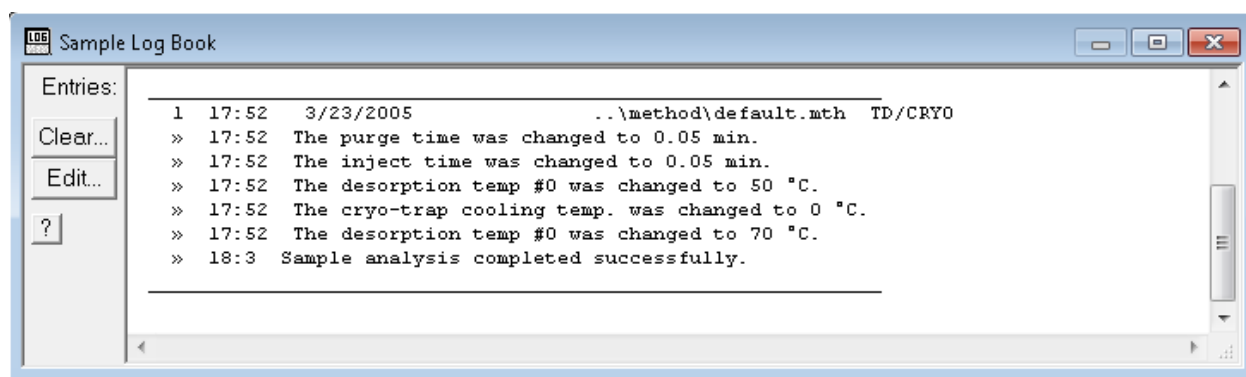


Figure 4.14: Log Book Window

The Thermal Desorption Software has extensive error and status logging functions. The **Sample Log Book** (above figure) keeps track of all runs, errors and method changes that occur during a run or sequence. It is an excellent tool to use for diagnosing problems, verifying that sequences have run completely, and tracking method changes. The Sample

Log Book can be accessed by clicking selecting the **View > Run Monitoring View** menu item or clicking the



button on the toolbar.

An entry in the Log Book is created every time the data system begins a run. The initial entry consists of one line of text and contains the Tube number, Time, Date, Data file name, Method name and the names of active instruments in the method being used (e.g., cryo-trap or TD). Most often, only one more entry is made for each sample when the data acquisition is complete, and it contains the time and a message confirming the successful completion of the sample. Entries for different samples are separated by a solid line. When an error or a method change occurs, the event is logged with the time, the error or change, and sometimes extra information about the sample.

Sample Log Book data is stored in a file named `default.log`, typically in the `C:\ProgramData\SIS\TD\logs` directory (or `C:\Documents and Settings\All Users*\SIS\TD\logs` on old versions of Windows). The Sample Log Book may be opened in Notepad by clicking the **Edit...** button on the Sample Log Book. The Sample Log Book may be archived (opened in Notepad and saved with a different name) or cleared via the **Clear...** button.

4.5 Menu Bar and Toolbar

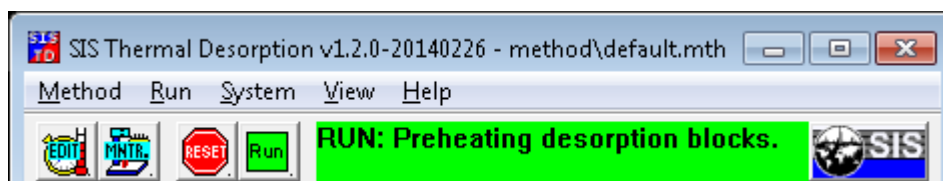


Figure 4.15: Menu bar and toolbar.

The functions on the menu bar and tool bar are described here.

4.5.1 Method > Open Method...

Opens an existing TD method. The TD method is saved in a text file with the file name extension ".mth".

If the TD software is integrated with a GC data system (e.g. ChemStation/MassHunter), you can also load GC method from the data system, and the TD software will automatically open the corresponding TD method.

4.5.2 Method > Save Method

Saves the current TD method.

If the TD software is integrated with a GC data system (e.g. ChemStation/MassHunter), you can save the GC method from the GC data system, and the TD software will save the corresponding TD method with it as well.

4.5.3 Method > Save Method As...

Saves the current TD method to a new name.

If the TD software is integrated with a GC data system (e.g. ChemStation/MassHunter), you would typically use the **Method > Save Method As** instead to save the method with the current GC data system method.

4.5.4 Method > Import Method...

Imports the contents of another TD method to the currently open method. See *Method Window* (page 46) for details.

4.5.5 Method > Print Method...

Prints the contents of the current TD method to the printer.

4.5.6 Method > Exit...

Closes the TD software. This will terminate any current TD run (use with caution).

4.5.7 Run > Reset Controller...

Resets the TD controller. Use this to terminate a run or reinitialize the controller.

4.5.8 Run > Run Sample(s)...

Opens the *Run Window* (page 54) for starting one or more TD runs (or the *Sequence Window* (page 55) if it contains multiple samples) independent of the GC data system. If the TD software is integrated with a GC data system (e.g. ChemStation/MassHunter), you would typically instead initiate the run from your GC data system, and your GC data system will then signal the TD software to start a run.

4.5.9 System > Configure...

Opens the *Configuration Window* (page 36) for configuring system parameters (e.g. communications ports, system limits, and debugging options).

4.5.10 System > Manual Control (Troubleshooting)...

Opens the *Manual Control Window* (page 57), which allows temperatures and valves to be manually turned on an off (useful for debugging). Presently this only works with the TD-5.

4.5.11 View > Method Edit View...

Shows the *Method Window* (page 46) for viewing/editing method parameters or monitoring time and temperature tracing during a run.

4.5.12 View > Run Monitoring View...

Shows various windows useful for monitoring the run including the *Sample Log Book* (page 51), *Status Window* (page 49), and *Method Window* (page 46).

4.5.13 Help > Help...

Opens the TD help and documentation.

4.5.14 Help > Help on Menu/Toolbar...

Displays help on menu and toolbar.

4.5.15 Toolbar

The buttons on the toolbar are shortcuts to menu items. From left-to-right, the buttons above are as follows: View > Method Edit View, View > Run Monitoring View, Run > Reset Controller..., Run > Run Sample(s) ..., and Help > Help.... The text in the center of the toolbar is a status bar displaying the current state of the system (e.g. running). The status bar is green when a sample is running.

4.6 Run Window

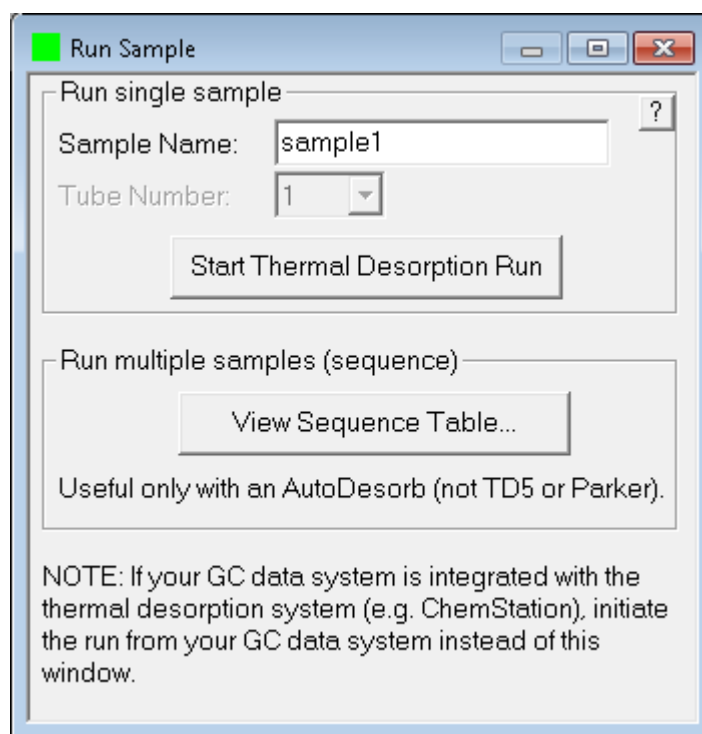


Figure 4.16: Run Window

This window enables you to begin one or more thermal desorption runs from the thermal desorption software.

NOTE: You need not use this dialog box if your GC data system is integrated with the thermal desorption software (e.g. ChemStation/MassHunter) because the GC data system will automatically signal the thermal desorption to start at the start of the GC data system run.

4.6.1 Description of Each Parameter

Sample Name

This is any arbitrary sample identifier you provide. It will be recorded in the *Sample Log Book* (page 51). (When the GC data system is integrated with thermal desorption system—e.g. ChemStation/MassHunter—the GC data system provides this information.)

Tube Number

The number of the sample tube to run. This is only used in the AutoDesorb (not the TD5). With the TD5, this field is disabled and by default set to 1. (When the GC data system is integrated with thermal desorption system—e.g. ChemStation/MassHunter—the GC data system provides this information.)

Start Thermal Desorption Run

Starts the thermal desorption run. Load the tube and input the above parameters before clicking this button.

View Sequence Table

This opens the *Sequence Window* (page 55) for running any number of samples in sequence. This is typically only useful for multi-sample thermal desorption systems such as the AutoDesorb (not the TD-5).

4.7 Sequence Window

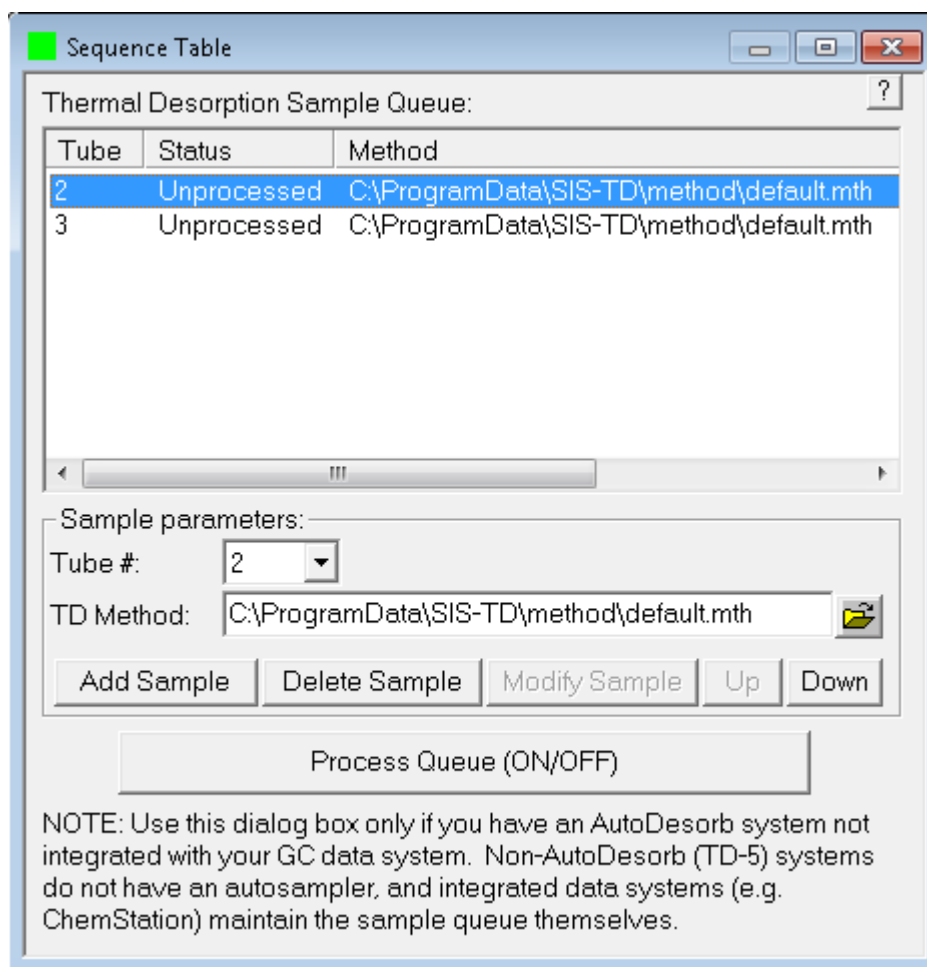


Figure 4.17: Sequence Window

This window enables you to set up and run a sequence of samples from the thermal desorption software. This window is largely intended only for multi-sample versions of the thermal desorption system (e.g. the AutoDesorb, not the TD5).

NOTE: You need not use this dialog box if your GC data system is integrated with the thermal desorption software (e.g. ChemStation/MassHunter) because the GC data system will initiate runs instead.

The sequence table lists all the samples to be run. Each sample can use an individual tube and thermal desorption method.

4.7.1 Description of Each Parameter

Tube #

The number of the sample tube to run (AutoDesorb only).

TD Method

The name of the thermal desorption method file to use (*.mth). Click the folder button on the right to select a method file using the file open dialog box.

Add Sample

Adds a new sample to the sequence table. To use this, enter the samples parameters and then click this button.

Delete Sample

Deletes the currently selected row in the sequence table. To use this, select the row in the sequence table and then press this button.

Modify Sample

Modifies the currently selected row in the sequence table. To use this, select the row in the sequence table, edit the parameters, and then press this button.

Up / Down

Moves the currently selected row to the previous/next position in the sequence table. To use this, select the row in the sequence table, and then press this button.

Process Queue (ON/OFF)

Enables or disables processing of the samples in the sequence table. When enabled, the system will run the first sample in the sequence table. When a sample run is complete, it is removed from the queue and the sequence advances to the next sample. This is a toggle button. When pressed down, samples in the sequence table will be processed. When not pressed down, the sequence table will be paused (but the current sample will continue running unless you press Reset).

4.8 Manual Control Window

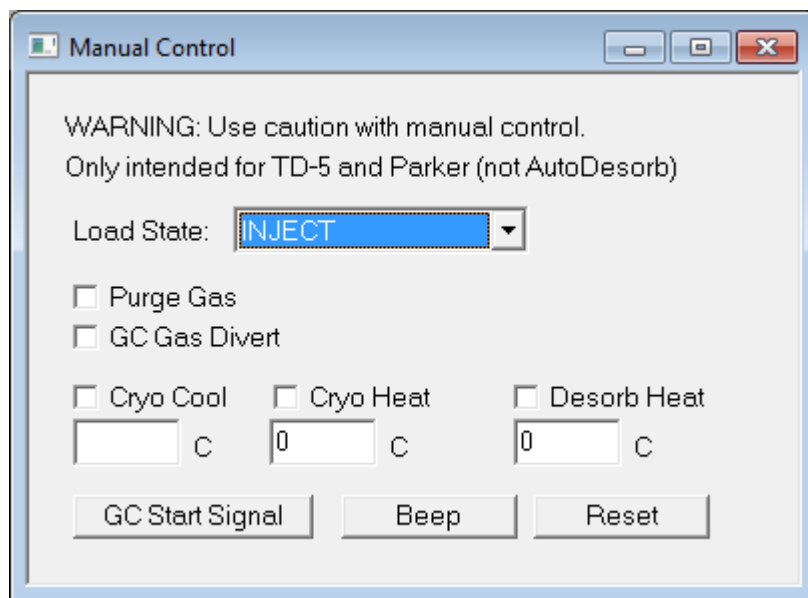


Figure 4.18: Manual control window.

This window allows you to manually operate the TD system movement, valves, and temperatures. It is useful for debugging purposes.

Presently, the window shown above can only be used with the TD-5, not AutoDesorb. If you are using an AutoDesorb, the *Hardware Tester Window* (page 59) will display instead.

4.8.1 Description of Each Parameter

Load State:: Sets the position of the TD arm mechanism.

- UNLOAD: unloaded tube position
- LOAD: loaded tube position (same as UNLOAD)
- INJECT: inject tube into GC inlet
- CLOSE BLOCKS: close blocks around injected tube.

Purge Gas:: Check to enable the TD purge gas.

GC Gas Divert:: Check to divert the GC gas through the TD system rather than through the GC.


Cryo Cool:: Check to enable cryo-trap cooling. The set-point temperature (C) is defined in the box below.

Cryo Heat:: Check to enable cryo-trap heating. The set-point temperature (C) is defined in the box below.

Desorb Heat:: Check to enable desorption block heating. The set-point temperature (C) is defined in the box below.

GC Start Signal: Causes the TD controller to send a start contact closure signal to the GC through the cable that connects the TD controller to the GC.

Beep: Causes the TD controller to beep.

Reset: Resets the TD controller. This is the same as pressing the  button.

4.9 Advanced Diagnostics Windows

Some advanced functions are available for diagnostics purposes. These are not usually displayed in the software. Contact SIS if you need to access them.

WARNING: Some of these windows bypass usual safety logic. Use caution when using these functions to avoid damage to the system or harm to the operator.

4.9.1 Command Tester Window

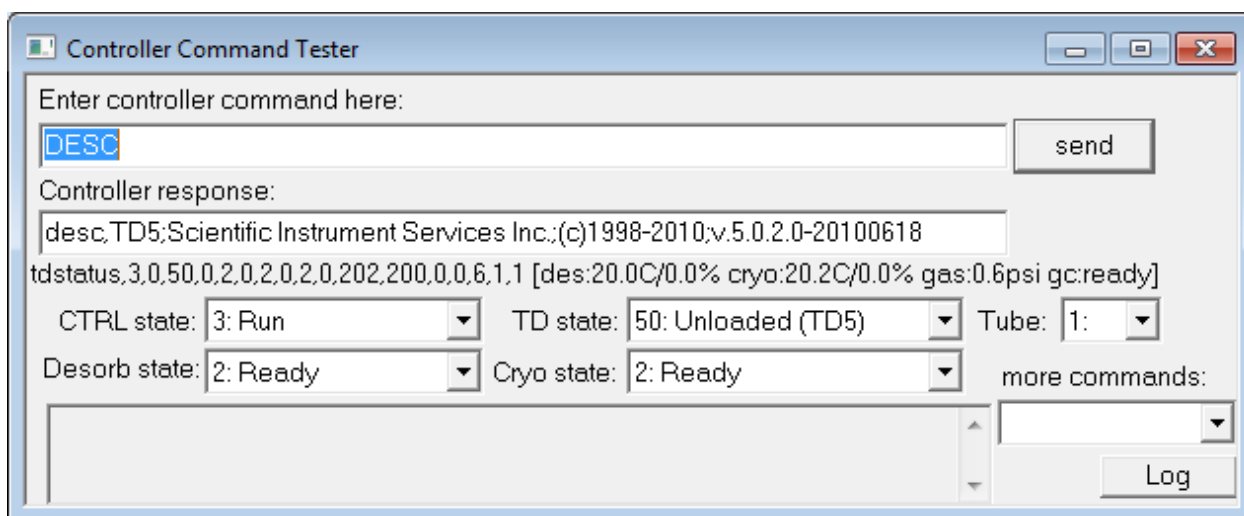


Figure 4.19: Command Tester window.

The Command Tester window allows you to send and receive communication commands to/from the TD electronics controller.

Enter a command in the first text box, press `send`, and the response is displayed in the second text box. Any system status commands (`TDSTATUS`) polled by the TD software are also displayed below it and decoded.

Various controls at the bottom of the window are provided for convenience for forming commands, including viewing and changing states.

Hint: The controller (CTRL) must be in state “3: Run” in order to do any heating, cooling, or arm movements.

The `Log` button displays the debug log, which records communications commands. This is the same as *Advanced Parameters Tab* (page 45).

If using the TD-5, you may want to instead use the *Manual Control Window* (page 57), which is intended more for an end user, not as low level, and perhaps a little safer and more restricted.

4.9.2 Hardware Tester Window

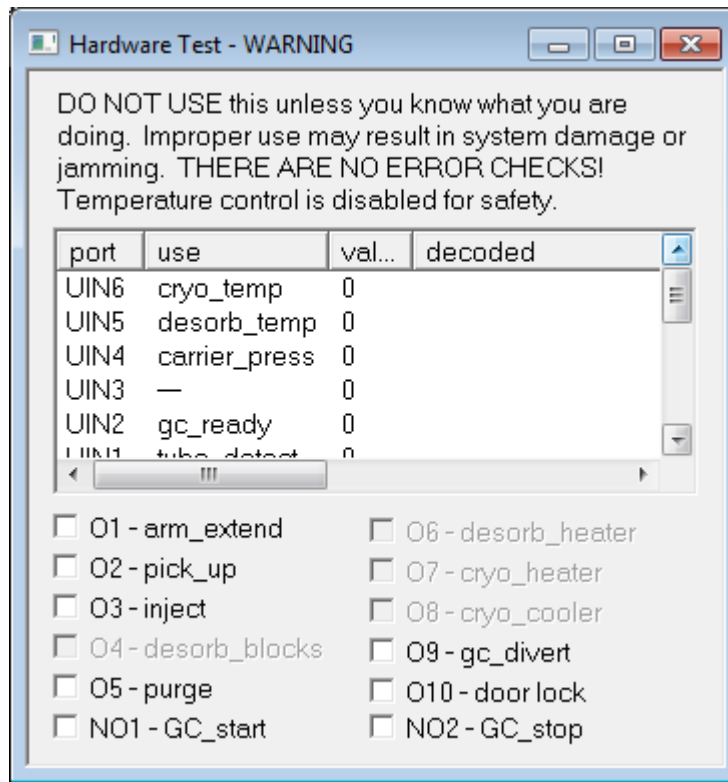


Figure 4.20: Hardware Tester window.

The Hardware Tester window allows you to directly view the digital input (DIN) and analog input (UIN) readings and set the digital output (O) on the microprocessor board in the TD controller. It is mainly intended for debugging by a technician familiar with what these controls do. The outputs should be used with much caution because they bypasses usual safety logic (e.g. prohibit extending the AutoDesorb arm when injected or the door is open). Some outputs related to the heating/cooling are disabled for safety and because the TD logic regulates these automatically according to the temperature set-points.

You may want to instead use the *Manual Control Window* (page 57), which are not as low level as this window, or the *Command Tester Window* (page 58).

THERMO XCALIBUR USAGE

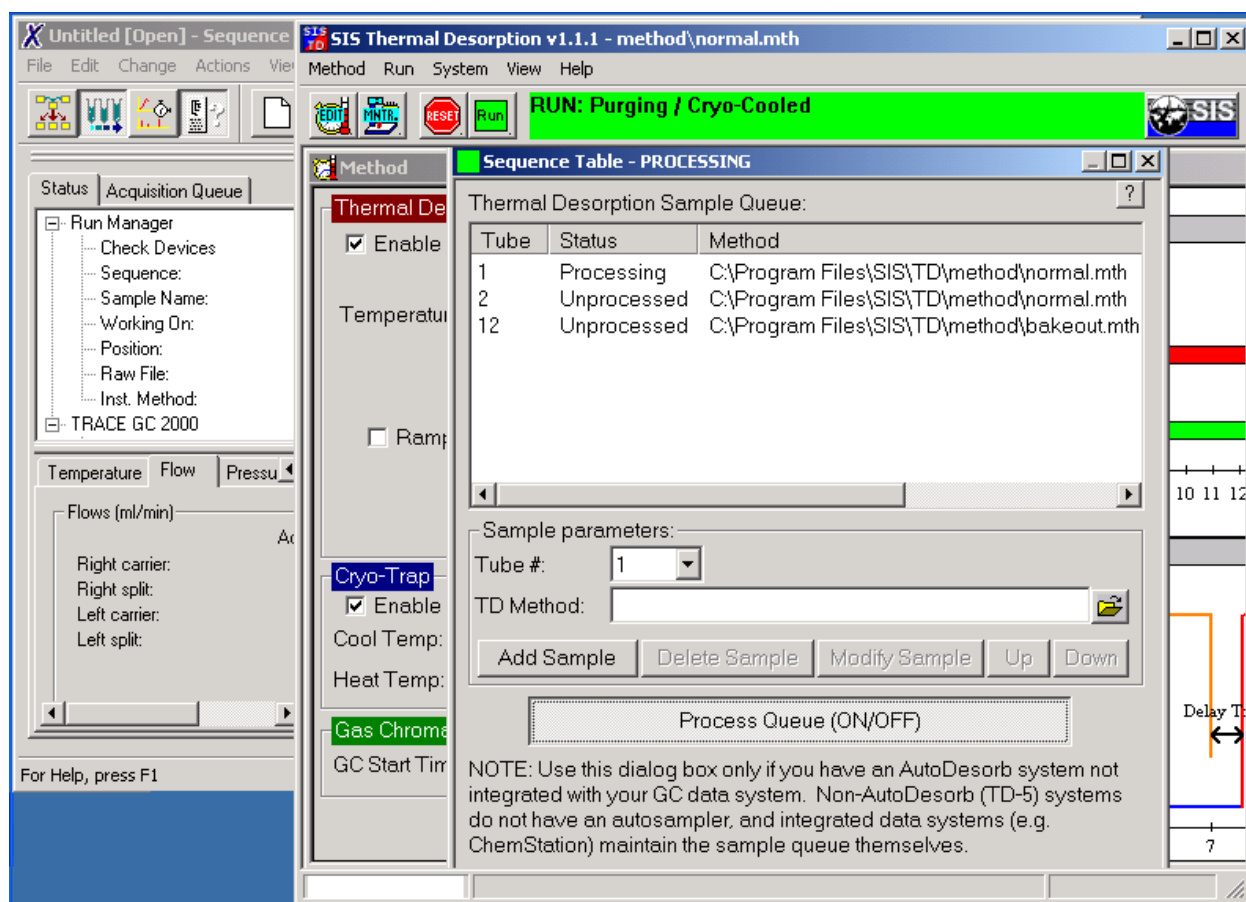


Figure 5.1: SIS TD software and Thermo Xcalibur software.

5.1 Overview

This document provides information specific to using the SIS AutoDesorb with the Thermo Finnigan Trace GC and Xcalibur. For general and more detailed information on the AutoDesorb, refer to the AutoDesorb manuals.

Xcalibur requires using standalone mode (not integrated). You can use the [Method Window](#) (page 46), [Run Window](#) (page 54), and [Sequence Window](#) (page 55) from the TD software to setup methods, runs, and sequences.

5.2 Installation

Your AutoDesorb can be installed as follows:

- 1. Ensure that GC and software (typically Xcalibur) is properly configured and working. Refer to the GC and Xcalibur documentation for details.
- 2. Install the SIS TD hardware. Refer to the SIS AutoDesorb Installation Manual for details as well as the GC specific notes below.
- 3. Install the SIS TD software. Refer to the SIS Thermal Desorption Software Manual for details.

5.3 Flow Control - Trace GC

For proper control of carrier gas flow for thermal desorption, your GC should have an appropriate digital pressure flow control module installed. In August 2005 we were informed Thermo upgraded their TraceGC flow controller and firmware to give more backpressure control than previous models, and we recommend the newer model. We tested # 19050235 Kit DPFC2001 Upgrade Trace kit which includes the 250 kPa Electronic Flow Controller and the latest EPROM version 2.08 (Thermo part# 30307019) for the mainboard behind the GC.

The flow controller has two adjustments that need to be made. One adjustment is the S1 micro-switches on the DFPC card (1 and 2 OFF and 3 and 4 ON) and the other adjustment is to a Pneumatic Switch with a block that needs to be oriented in a certain position.

Regarding the EPROM placement on the board, the board lays flat inside the grey plastic “breadbox” and can be removed by unplugging cables and removing 4 screws from the underside of the plastic “breadbox”. There is an index on one side of the EPROM and on one side of the mainboard that need to match up.

Carrier gas line- cut and both ends connected into SIS GC Gas Valve Assembly Split Vent line- cut and one end connected into a Tee and the other end going to the injector Septum purge line- cut and one blocked off near the injector but the other open end goes into a Tee

Thermo has another kit for 3rd party P&T systems (119245-0001, “Purge-and-trap interface for TRACE GC capillary injector”), but this kit is not required. THE ORIGINAL MANUAL #31709382 HAS BEEN REVISED FOR THIS 119245-001 KIT. THE PNEUMATIC TUBING SCHEMATIC IS DIFFERENT BETWEEN THE ORIGINAL VERSION OF THIS MANUAL WE RECEIVED. THE MICRO-SWITCHES AND PNEUMATIC SWITCH CONFIGURATIONS ARE THE SAME BETWEEN BOTH VERSIONS OF THE MANUAL.

5.4 Handshaking signals between the Trace GC and AutoDesorb

A handshaking cable (provided by SIS) must be connected between the “Generic Handshake” connector on the back of the GC and the “Remote Start” connector on the back of the AutoDesorb controller.

The handshake signals must also be properly configured on the Trace GC keypad.

On the GC, press Config and select the Handshaking menu item. Ensure that the following settings are made:

- **Remote Start In** should be ***High to low**. This allows the AutoDesorb to start the GC run.
- **Inhibit Ready In** should be ***When low**. This signal is not used.
- **GC Ready Out** should be ***When high**. This lets the AutoDesorb know when the GC is still running. If the AutoDesorb waits and does not run additional samples while the GC is running.

5.5 Running Samples

In Xcalibur, set up on or more GC methods and set up a sequence of one or more GC sample runs (figure below).

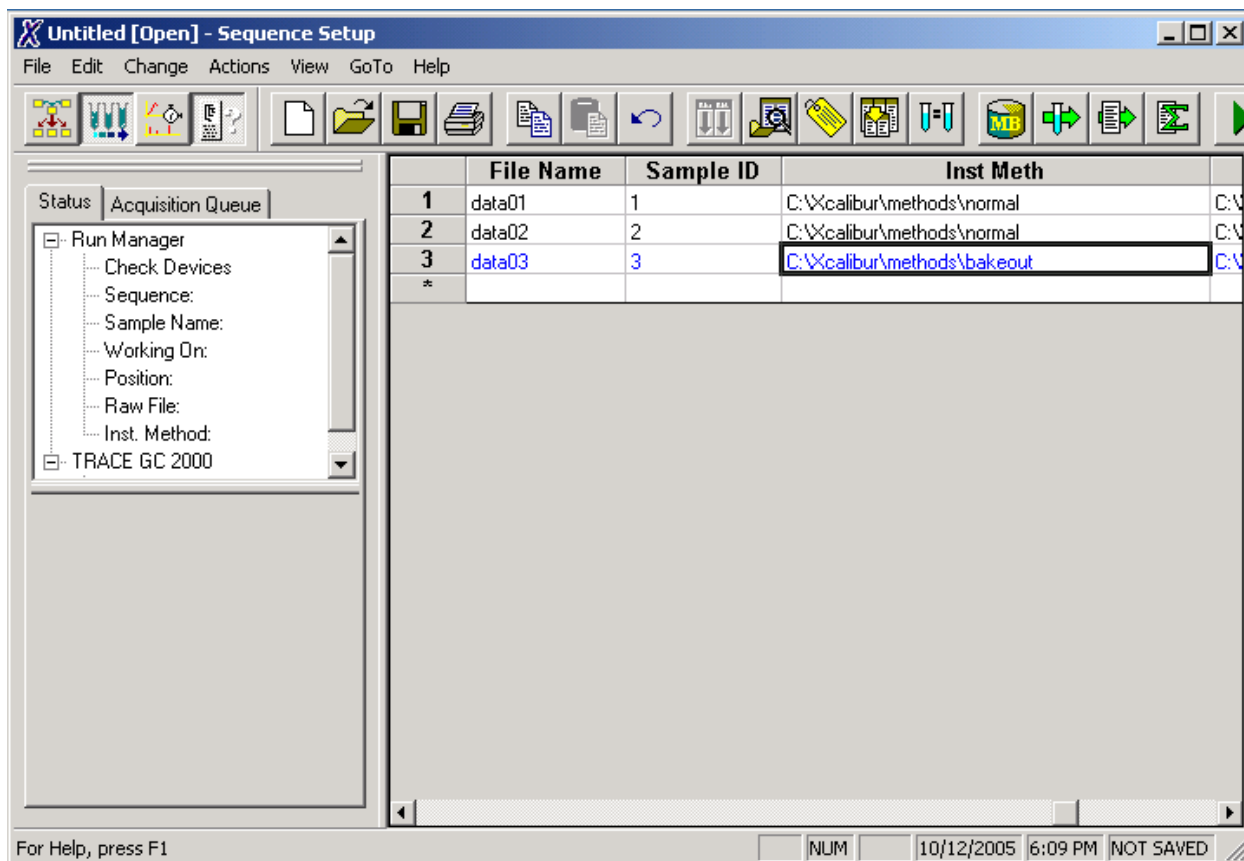


Figure 5.2: GC sequence in Xcalibur. Here is shown three GC runs using GC methods “normal” and “bakeout.”

In the TD software, set up your TD methods. You may create any number of methods: either a single method or different methods for each sample (below figure). It can be useful to give your TD method files the same names as the GC method files they are used with, but this is not required.

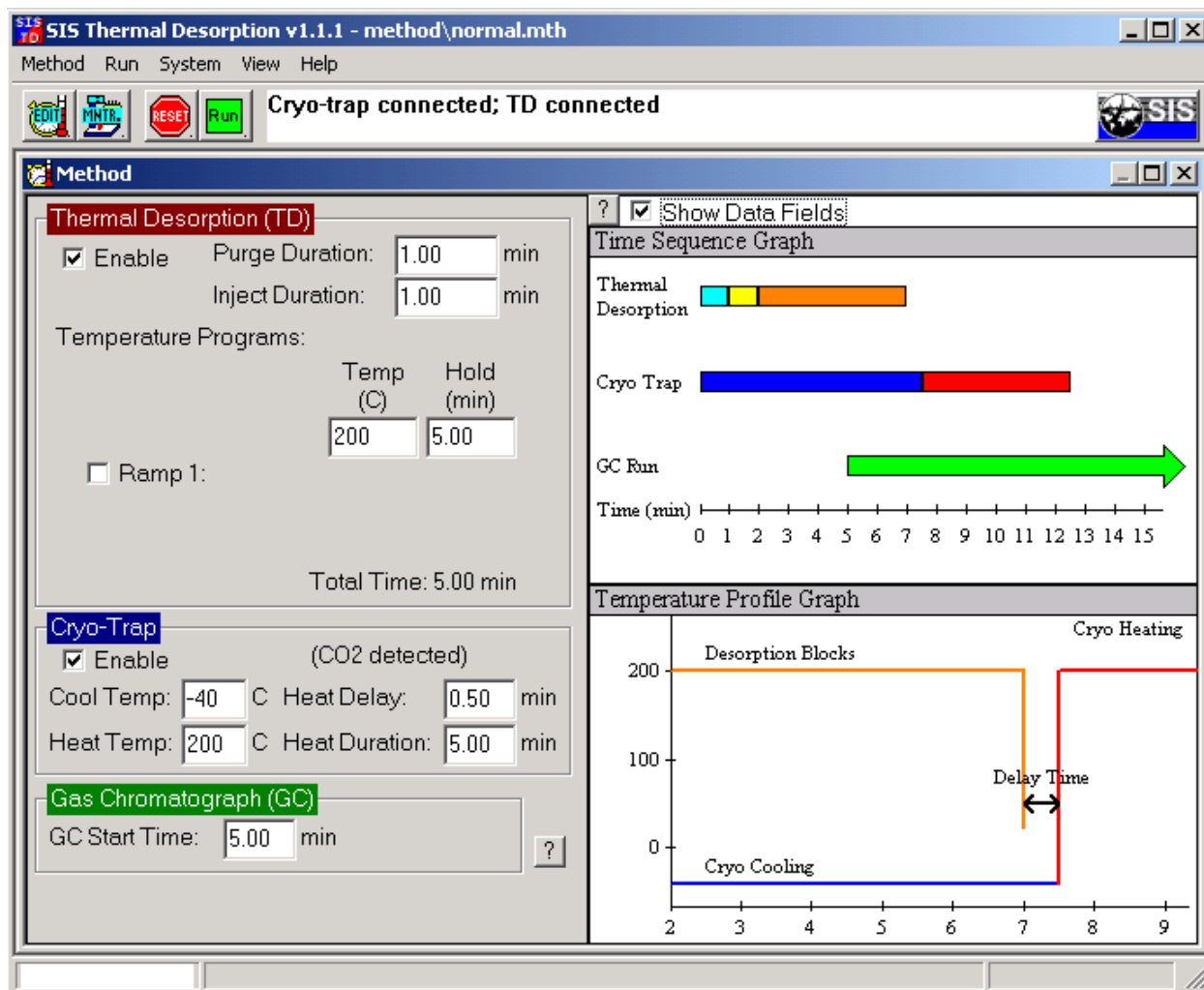


Figure 5.3: Setting up TD methods in the TD Software. Here is shown setting up a TD method named “normal.mth.”

In the TD software, set up a TD sequence (below figure). To edit the sequence, choose Run > Run Samples(s) . . . from the menu and then click View Sequence Table . . . Typically, each line in the TD sequence corresponds with a similar line in the GC sequence.

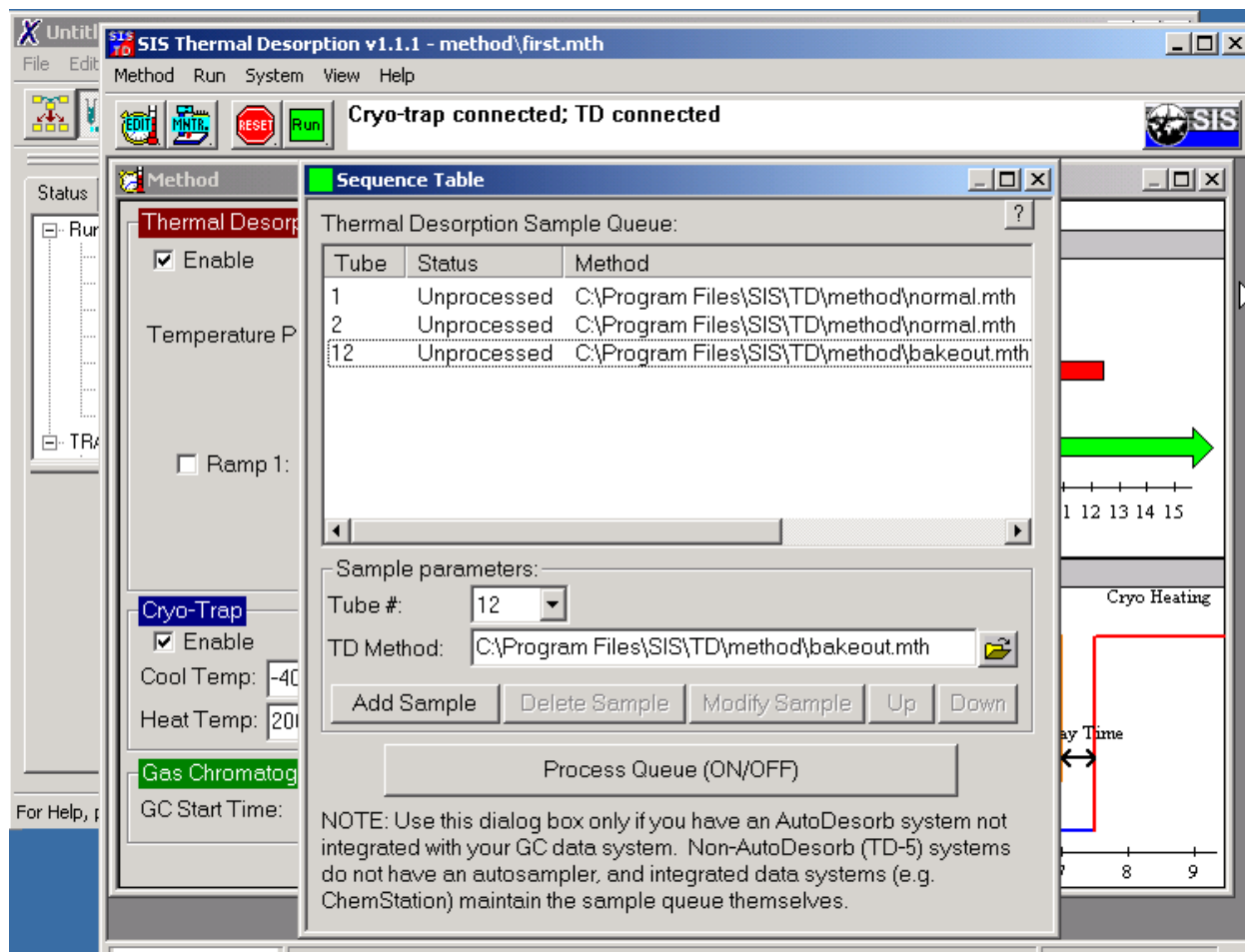


Figure 5.4: Setting up a TD sequence in the TD Software. This sequence has three samples at AutoDesorb tube numbers #1, #2, and #3 and using TD methods of “normal.mth” and “bakeout.mth”.

In Xcalibur, begin running the GC sequence (Actions > Run Sequence... menu) (below figure). Ensure that NO instrument is marked as the start instrument (the AutoDesorb is essentially the start instrument). The GC will remain idle until it receives a Start Run contact closure from the AutoDesorb.

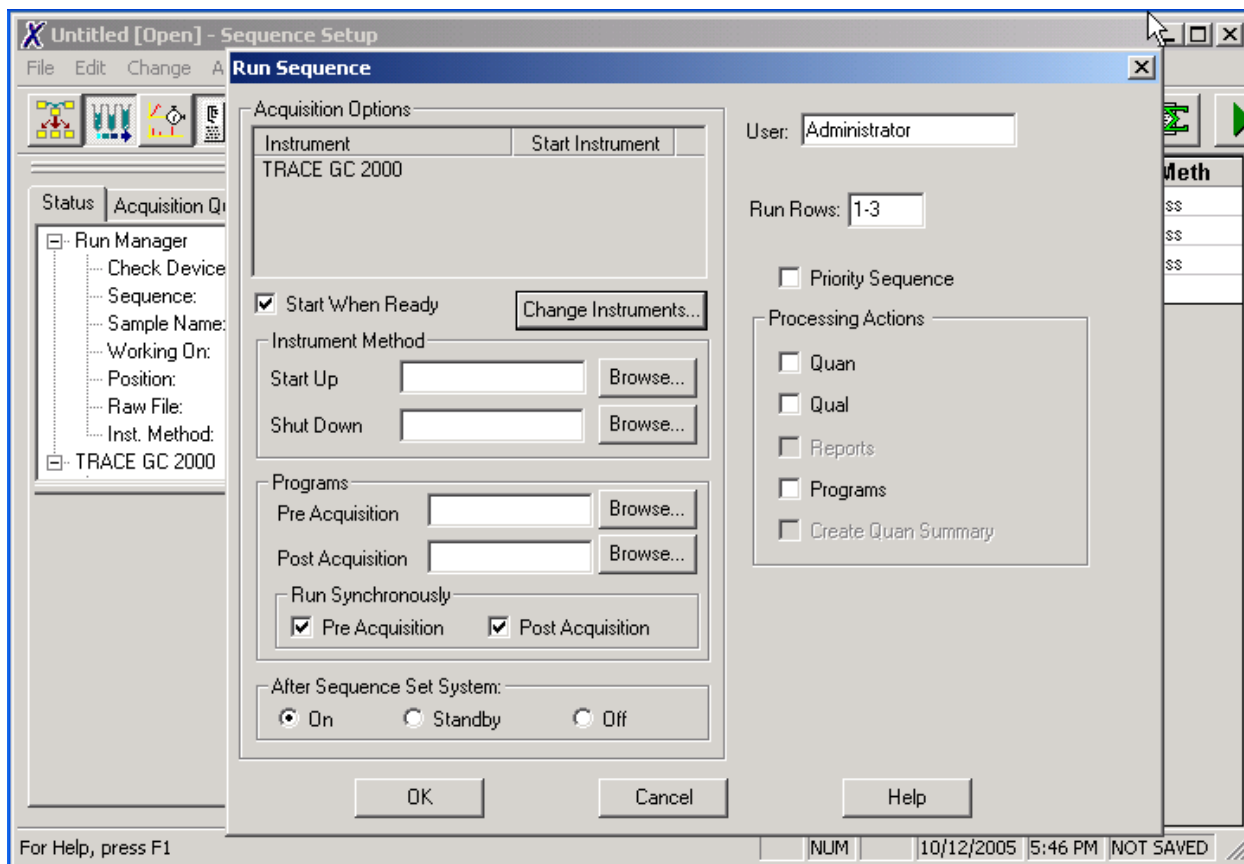


Figure 5.5: Starting the GC sequence in Xcalibur.

Back in the TD software, toggle the `Process Queue` button to ON. The `AutoDesorb` will now begin the desorption process. Upon completion of TD, it will send a `Start Run` contact closure signal to the GC. The TD Software will not begin the next thermal desorption run until it receives a `READY` signal back from the GC.

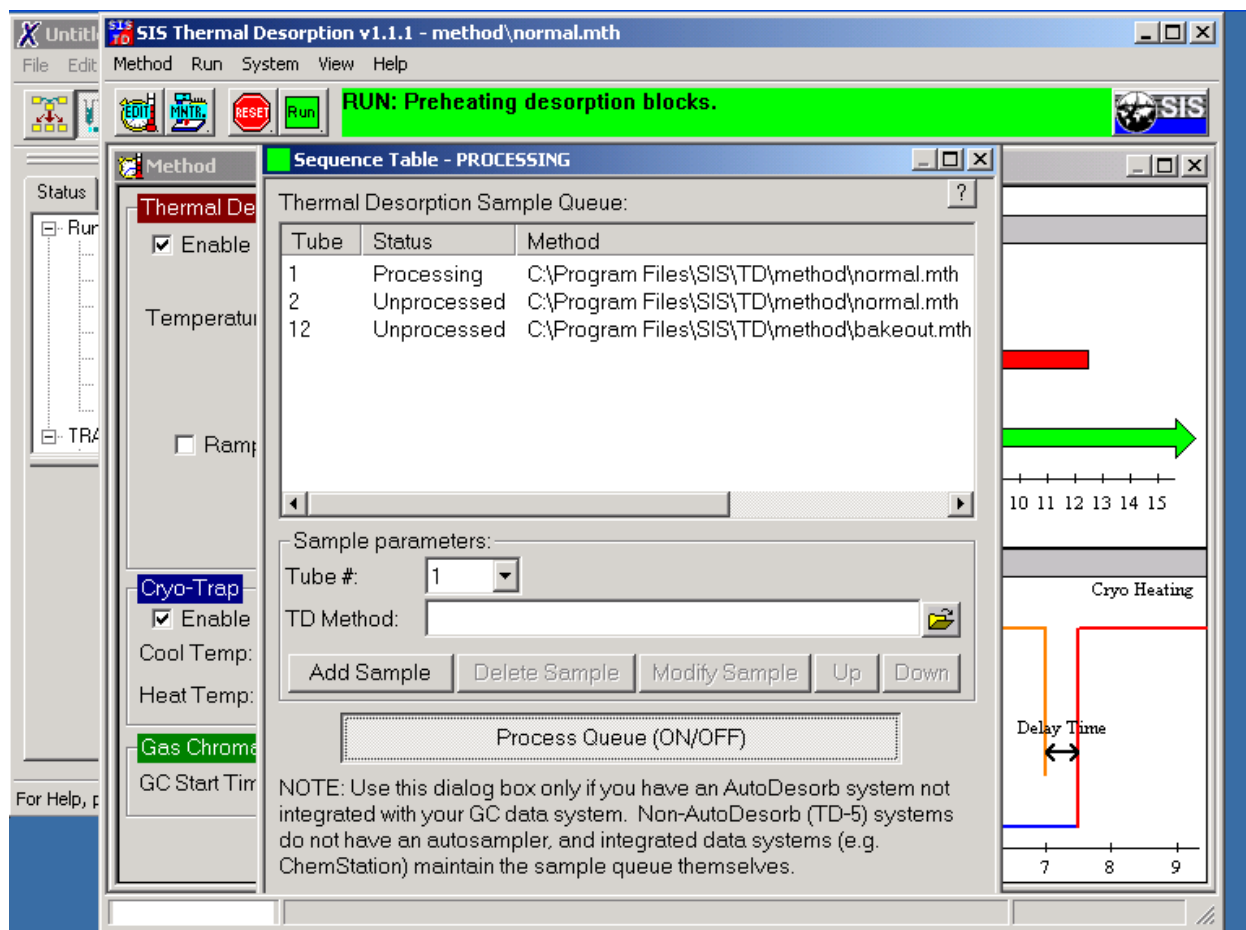


Figure 5.6: Starting the TD sequence.

If you ever need to terminate the sequence, you must terminate both the TD and GC Sequences (terminate the thermal desorption sequence first).

5.6 Additional Notes

Ensure that Prep Run Timeout (min) in the GC method is sufficiently high.

October 2005

CHEMSTATION/MASSHUNTER MODIFICATIONS

The thermal desorption software interfaces to Agilent GC data system software (ChemStation or MassHunter) via ChemStation/MassHunter macros. The thermal desorption software installs its own macro file (`sistd.mac`) into the ChemStation/MassHunter program folder and may make a few other modifications to ChemStation/MassHunter to allow it to use those macros.

You can use the *Communications Parameters Tab* (page 38) on the *Configuration Window* (page 36) to install or uninstall these macros.

6.1 Technical Details

The following technical details are provided for reference and can be ignored by most users.

The installation places the TD macro file, `sistd.mac`, in the `<CHEMSTATION>\msexecore` or `<CHEMSTATION>\core` directory. `<CHEMSTATION>` is typically `c:\msdchem`, `c:\chem32`, `c:\gcms`, or `c:\hpchem`. The uninstallation also edits the `<CHEMSTATION>\msexecore\user.mac` or `<CHEMSTATION>\core\user.mac` file to tell ChemStation/MassHunter to use the `sistd.mac` file.

Older versions of MS ChemStation (e.g. prior to G1701DA D.01.00sp1) do not support `user.mac`. Instead, the installation modifies the following system macros:

- `<CHEMSTATION>\msexecore\top.mac`
- `<CHEMSTATION>\msexecore\topmenu.mac`
- `<CHEMSTATION>\msexecore\topmeth.mac`
- `<CHEMSTATION>\msexecore\topenvbr.mac` (if present)

All changes to the macros are enclosed in `!***SISTD_BEGIN_MODIFICATIONS` and `!SISTD_END_MODIFICATIONS` comment tags and are therefore easily identifiable. Backups of your original ChemStation macros will be placed in an `<CHEMSTATION>\msexecore\sistd_backup` or `<CHEMSTATION>\core\sistd_backup` directory.

If `user.mac` is used, ChemStation/MassHunter may generate a `<CHEMSTATION>\X\hooks.ini` (where X is the instrument number) when it is run to register the hooks defined in `user.mac`. These hooks will be removed from the `hooks.ini` file upon uninstallation.

SOFTWARE LICENSE AGREEMENT

Scientific Instrument Services, Inc.

Be sure to fill out and send in the enclosed registration card. This is required for technical support.

The information below includes important limitations to your right to copy or distribute any of the software included on this disk or installed by this software. It informs you that the Software is protected under U.S. Copyright Law. Licensee may copy it only to make a backup copy. If any component of this software is installed on more than one computer you must license a separate copy for each user. If Licensee's computer system is a local area network or wide area network, Licensee must license those respective versions of the Software. If you do not agree with the terms and conditions of this agreement, close this installation and return the complete package to Scientific Instrument Services, Inc.

License: In consideration of payment for the purchase of this Software SIS grants to Licensee, a nonexclusive right to use and display this copy of the Software on a single computer, at a single location. If the single computer on which you use the software is part of a network system, a separate License is required for each user on the network system.

Software Ownership: Licensee owns the physical media on which the software is originally or subsequently recorded or fixed, but Scientific Instrument Services, Inc. retains title, ownership and copyrights of the software recorded on the original disk copy(ies) and all subsequent copies of the Software or derivative works, regardless of the form or media in or on which the original and other copies may exist. This License is not a sale of the original Software or any copy thereof. You may not copy the disk(s), disk contents or accompanying printed material to sell, rent, lease, lend, or otherwise distribute copies of the Software or included documentation to others.

Terms of Use: Licensee may use the Software on only one computer at a time. Licensee may not decompile, translate, reverse engineer, or disassemble the Software, nor may Licensee create derivative works from it. Licensee may not transfer the Software to anyone unless Licensee permanently transfers all copies of the Software in its possession, and the recipient accepts all of the terms of this License. This License shall continue until Licensee returns the Software to Scientific Instrument Services, Inc. or properly transfers or destroys all copies of the Software in Licensee's possession. Scientific Instrument Services, Inc. may terminate this License at any time without notice if Licensee breaches any of its terms.

Disclaimer: Scientific Instrument Services, Inc. makes no warranties, express or implied, with respect to the Software or its quality, performance, merchantability or fitness for any purpose. The Software is licensed and delivered "as is".

LIMITATION OF LIABILITY: In no event will Scientific Instrument Services, Inc. be liable for any direct, incidental, indirect, special or consequential damages in connection whatsoever including , without limitation, damages for loss of profits, business interruption, loss of information, data, sample material, or other pecuniary loss arising out of the use of or inability to use the Software even if Scientific Instrument Services, Inc. has been advised of the possibility of such damages. (Some states do not allow the exclusion or limitation of implied warranties, so the above limitation may apply to varying degrees).

Scientific Instrument Services, Inc. warrants to the original Licensee the disk(s) on which the Software is recorded is free from defects in materials and workmanship under normal use and service for a period of ninety (90) days from the date of shipment. Further, Scientific Instrument Services, Inc. limits the duration of any implied warranty(ies) on the

disk(s) including the warranties of merchantability and fitness for a particular purpose to the respective period stated above.

Scientific Instrument Services, Inc.'s entire liability and Licensee's exclusive remedy as to the disk(s) shall be, at Scientific Instrument Services, Inc.'s option either return of the purchase price or replacement of the disk that does not meet the aforementioned limited warranty and which is returned to Scientific Instrument Services, Inc. If failure of the disk has resulted from accident, abuse, or misapplication, Scientific Instrument Services, Inc. shall have no responsibility to replace the disk or refund the purchase price. Any replacement disk will be warranted for the remainder of the original warranty period or 30 days, whichever is longer.

The above are the only warranties of any kind, either express or implied, including but not limited to the implied warranties of merchantability and fitness for a particular purpose, that are made Scientific Instrument Services, Inc. on the Software. No oral or written information or advice given by Scientific Instrument Services, Inc., its dealers, distributors, agents, or employees shall create a warranty or in any way increase the scope of this warranty, and you may not rely on any such information or advice.

This License is governed by the laws of the State of New Jersey, USA.

This software contains other components with their own copyright:

- Microsoft C/C++ runtime libraries - (c) Microsoft Corporation.
- Microsoft gdiplus.dll redistributable (installed on Windows 2000 only) may only be used with a validly licensed Microsoft operating system.
- EnumSerialPorts Copyright (c) 1998 - 2013 by PJ Naughter

SOFTWARE CHANGE LIST

This is a list of changes to the SIS Thermal Desorption software.

1.2.0 - 2014-02-26

This release adds support for Windows 7, ChemStation E.02.02, and MassHunter B.07 and drops support for very old (pre-Windows 2000 systems). It also makes a variety of bug fixes and improvements to features and documentation.

- Windows 7 is now officially supported: (2012-12-14)
 - Settings (sistd.ini), logs (default.log/debug.log), and the default method (default.mth) are now written to the %ALLUSERSPROFILE%\SIS-TD folder, where %ALLUSERSPROFILE% is typically c:\ProgramData on Windows 7 or c:\Documents and Settings\All Users on Windows XP. Previously these were written to in the C:\Program Files*\SIS\TD folder. (or C:\Users\\AppData\Local\VirtualStore\Program Files*\SIS\TD if VirtualStore enabled on Windows 7). (2014-02)
 - Fix Method Edit parameters panel invisible in Windows 7.
 - Fix crash on method load/save dialog boxes.
 - Fix “System > Run Samples (Sequence Table)” “Method” column corrupted.
- ChemStation compatibility (2014-02):
 - ChemStation E.02.02.1431 supported (fixed “CF_Text” error in Data Analysis—described under sistd.mac). E.02.00.493 (2008) was already supported.
 - MassHunter B.07.00.1413 (Data Analysis F.01.00.1903) now supported.
 - Autodetect c:\chem32 (newer GC ChemStation directory).
- Debug Log enhancements: (2014-02)
 - The Configure dialog now displays the debug log path.
 - New real-time Debug Log window, accessible from Configure dialog (View button) or Advanced Diagnostics.
 - The “debug.log” file now includes time stamps and improved formatting.
 - Any previous debug.log is renamed with a time stamp rather than overwritten on program startup. This avoid losing debug log data upon program restart.
 - Turning debug logging on/off now no longer requires a program restart or controller reset.
 - Debug logging is now on by default. This can facilitate diagnostics.
- Configure dialog enhancement: (2014-02)

- The serial port list now identifies which serial port numbers are found or not found on the system. This avoids the user trying non-existent serial ports.
- Add Test button to test selected serial port.
- Add button to conveniently launch the Device Manager in the Windows Control Panel. This is useful for displaying serial ports on the system as well.
- Most changes no longer cause the controller to reset. Exceptions include the serial port name.
- Configure Dialog: Chemstation Instrument #4 was mislabeled #3. (2014-02)
- More responsive when serial communication cannot be established: (2014-02)
 - Make Reset button respond faster (e.g. 2 sec rather than 5-30 sec).
 - Report a communication error faster when Reset fails to establish communication (e.g. 25 sec rather than 1 min).
 - Close application faster (2 sec rather than 10 sec).
- ChemStation Integration and Macro (`sistd.mac`)
 - Agilent MassHunter support. Tested on B.07.00.1413 (12-May-2013), with Data Analysis F.01.00.1903.
 - ChemStation E.02.02.1431 support. Fixed “CF_Text” error observed in the Data Analysis status bar. This error also caused the Thermal Desorption software to stop responding to ChemStation events after the first sample in a sequence is run since ChemStation Instrument Acquisition macros invoke Data Analysis (`xdataanalysis` command), which silently fails loading `sistd.mac` due to the CF_Text problem, thereby clearing ChemStation hooks (`hooks.ini` file).
 - Major structural changes to macro, for MassHunter support and cleanup. By default, DDE communication is now disabled and all communication is via command line. MassHunter IA doesn’t support DDE, and DDE connect is prone to freezing if -any- window is frozen (Microsoft KB136218).
 - Fix - Fix DDE communication problem between some rare installations of ChemStation and the TD software. Make DDE communication case insensitive. TD-I20070828
- Installation:
 - Installer: confirm overwriting any preexisting settings (`sistd.ini`) or default method (`default.mth`). Do not overwrite any existing logs. Don’t delete these files on uninstall.
 - Uninstall: Fix: Problems starting ChemStation after uninstall. Uninstall now removes customizations to `hooks.ini` files. Without this, ChemStation may fail to start properly with an error like “ChemStation did not complete its initialization cycle.” followed by displaying an “icstart*.log” containing near its bottom “Macro: CHECKHOOK, Cmd: SISTD_load_method MSG: Undefined symbol: SISTD_load_meth”. A workaround in previous versions was to delete the `c:\msdchem\X\hooks.ini` files for each instrument number X.
 - Uninstall: automatically uninstall ChemStation/MassHunter macros and `hooks.ini` settings upon uninstall. Previously the user needed to disable ChemStation integration from the configuration dialog before uninstalling.
 - internal: remove winzip from setup.exe (internal).
 - internal: smaller Perl.
- Runs:
 - Add advanced option to prevent desorption blocks heaters from turning off during the run, in order to reduce cycles times. This is documented in `prevent-desorb-cooldown.txt`. (2011-04-09)
 - Prematurely terminate tube cool down (which by default is 5 min but can be globally adjusted) if desorption blocks temperature is below 50 C. This is intended to avoid unnecessary delays under low temperatures.

- Fix - The “System Limits” dialog box > “Tube cool down time” setting was being ignored. TD-I20110718
- Fix - Possible unspecific reporting of communication error type (2011-04-09)
- Fix - On attempt to prematurely stop the GC, TD possibly will advance prematurely prior to GC actually stopping. (2011-04-09)
- Fix - Cleaner software shutdown. (2007-08-28)
- Advanced Diagnostics, Command Tester, and Debugging
 - Add convenience controls for displaying and modifying current states and performing common commands.
 - Always display latest TDSTATUS command and interpretation.
 - Fix - “SIMULATOR” debug mode (in communication settings) sometimes gave random communication errors after multiple resets due to multiple simulators being created simultaneously. (2014-02)
 - Fix - “SIMULATOR” debug mode - gas pressure was not being simulated right.
- Title Bar and Other GUI
 - Method Open/Save dialog boxes now default to current method path. (2012-12-14)
 - Fix - Title bar was displaying `method\default.m` as the method name if the current ChemStation method did not have TD settings (`ads.mth` file). This may have given the false impression that ChemStation and the TD software were not communicating. The TD software now displays the ChemStation method name in this case and an asterisk (*) indicating that the TD settings are not saved in the current ChemStation method.
 - Fix - Asterisk (*) in title bar indicating method unsaved was not properly updated on using the “Method > Import Method” menu.
 - Display error on failure to write configuration settings (System Configure) in `sistd.ini` file or method (`ads.mth`), as can occur due to Windows 7 permissions.
- Documentation:
 - Add notes on compatibility of hardware and software.
 - Expand/improve software documentation (`sistd.chm/sistd.pdf`).
 - Software documentation now in Windows Help format (`sistd.chm`).
 - Manual - Updated 5890 documentation (2006-02-17)
- Command line and data system interface (internal):
 - New command line options in `sistd.exe` to send commands to currently running `sistd.exe`. Example: `sistd.exe method_path c:/MSDCHEM/1/methods/ method_file test.m tube 2 data_file 123.d gc_kill_time 60 loadmethod All poke variables: method_path, method_file, tube, data_file, gc_kill_time. All execute commands: loadmethod, savemethod, prerun, completedrun, stoprun, printmethod, exit, hello` Commands are normally sent via WM_COPYDATA but will be sent via DDE if the “dde” command line option is specified before.
 - New “hello” data system command (no-op function to test communication).
 - New “printmethod” data system command to print TD method (currently disabled in `sistd.mac`).
 - New “instok [n]” command line command to check whether the TD is enabled for ChemStation/MassHunter instrument number n.
 - New “outfile” command line option for writing process exit code to a text file, such as for MassHunter which can’t read process exit codes. `sistd.exe outfile c:/temp/result.txt`

- New “uninstall” command line option, used by uninstaller to uninstalling ChemStation/MassHunter macros.
- Allow passing command line arguments via new-line delimited text file (`sistd.exe @filename.txt`) since older ChemStations limit command line length.
- DDE poke commands now remove up to two characters of whitespace rather than always removing exactly two characters (cleaner and less ChemStation specific).

- Note: Some customers were provided 1.1.2-TEST* beta versions with some of the above fixes.

TD-I5 (firmware and software)

- Fix: Modifications to the desorption temperature program in a method during desorption does not always get activated on the controller

1.1.1 - 2005-10-12

- **Main points**

- Added GC ChemStation G2070BA B.01.03 compatibility (and probably newer GC ChemStations as well) (ref. issue # TD-I3)
- Added MS ChemStation G1701DA D.02.00sp1 compatibility. D.01.02sp1 and above now use the ChemStation hook mechanism.
- Significant improvements to the sequence table (for AutoDesorb systems without GC data system integration).
- New `Method > Print Method...` function in the TD software (note: not accessible from ChemStation though)
- AutoDesorb hardware tester now available from `System > Manual Control...`
- Added separate software manual.
- Fixed - `debug.log` now saved in correct location if `sistd.exe` started from a different directory.

- Sequence table window revamped (more robust GUI, input checking, and handing of disabled states on controls).
- When a sequence is non-empty, clicking the “Run” button now opens the sequence table rather than the single run window.
- The sequence table is now be opened from the single sample run window. `Run > Run Sequence...` menu item was removed.
- Added `Method > Exit` menu item.
- updates `sistd-template.mac` as described on TD-I3 for B.01.03 ChemStation compatibility.

1.1.0 - 2005-06

- incorporated TD5 simulator (serial port SIMULATOR)
- support for serial ports other than COM1-4 (FIX)
- reorganized directory structure
- refactored software (internal) structure, build system.
- command tester window better usability
- command-bar at bottom left of screen for special functionality (e.g. advanced diagnostics)
- “TD/Cryo-trap *not* detected” message changed to “TD/Cryo-trap *not* connected”
- merged `limits.ini` into `sistd.ini`

- “manual control window” is now “run single sample” window and is accessible from the normal views via the menu or toolbar.
- menus names changed: File -> Method menu items moved: items under “Window” moved to other menus. Time/Temperature Settings moved to Method. new menu Status containing Instrument Status (Was Window > Status) Sample Log Book (was in “Window”) renamed “Window” to “View”
- If TD5 is connected, then the carousel table of tubes does not display.
- min pressure to run minimum is now -10 psi rather than 0 (e.g. in case of offset)
- don’t display TD temp, desorb pressure and purge gas if TD is disconnected.
- gui - changed window title from “Scientific Instrument Services AutoDesorb” to “SIS AutoDesorb”
- disable editing of sample logbook (changes aren’t preserved anyway)
- new “Advanced Tab” in configuration window: enable/disable “debug logging”
- increased font size (10pt not 8pt)
- combined time and temperature settings windows into a single “TD Method” window.
- changed precision on numbers (e.g. temps are rounded to a degree rather than to a tenth of a degree)
- reworded text
- title bar: display “SIS Thermal Desorption” not “SIS AutoDesorb” and display software version number.
- removed log file selection in Sample Log Book.
- removed “copy” to clipboard control on sample log book
- log window now displays on run monitoring view
- retitled: data entry view to method edit view
- `sistd.ini` - Window Positions > Log changed to Window Positions > Logbook and format changed to “left, top, right, bottom, visible” rather than “left, top, visible”
- [gui] Added SIS Logo on top right that links to help.
- [gui] status bar turns green when running
- [gui] sample log book can be resized
- prompt to save changed method before run single from td software.
- “Export method...” changed to “Import method...”
- no need to restart software on changing communications port or other system limits
- `debug.log` - encode non-printable chars
- moved `default.m\ads.mth` to `method\default.mth`
- renamed `adstop.exe` to `sistd.exe`
- in advanced config, added support for custom configuration commands on reinitialization
- F1 opens help
- “ChemStation Path” setting in `sistd.ini`
- renamed `ads.ini` to `sistd.ini`
- configure ChemStation instrument from software.
- change default max desorb temp from 300 to 400C.

- pressure reading is zero-ed on initialization to correct any offset

1.0.3

- fixed solvent delay handling (only in G1701XX),
- added -4 deg undershoot for cryo-trap cooling, ...

1.0.2

- more ChemStation support, ...

1.0.1

INDEX

A

Add Sample [Sequence], 56
Advanced configuration commands [Config], 45
Advanced Diagnostics, 58
Advanced Settings [Config], 45
Agilent ChemStation, 8
Agilent MassHunter, 8

C

changes, 72
ChemStation, 8
ChemStation compatibility, 10
ChemStation macros and modifications, 67
CO2 [Status], 50
Command Tester window, 58
communication check, 23
Communications Port [Config], 38
Communications Settings [Config], 38
compatibility, 10
Configuration window, 35
configure (install), 20
Configure [System menu], 53
Connect desorption software to these GC instruments [Config], 43
Cryo Cool Temp (C) [Method], 48
Cryo Gas Type (CO2/LN2) [Status], 50
Cryo Heat Delay (min) [Method], 48
Cryo Heat Duration (min) [Method], 48
Cryo Heat Temp (C) [Method], 48
Cryo Status [Status], 50
Cryo Temp (C) [Status], 50
Cryo-Trap Max Cooling Time (min) [Config], 44
Cryo-Trap Max Heating Temp (C) [Config], 44
Cryo-Trap Max Heating Time (min) [Config], 44

D

data system software, 8
Debug Logging [Config], 45
debug.log, 45
default.log, 51
Delete Sample [Sequence], 56

Desorption Temperature Programs (Ramp/Temp/Hold) [Method], 48
Desorption Total Time (min) [Method], 48
Divert [Status], 50
documentation, 1
Down [Sequence], 56

E

e-mail, 3
Enable Cryo-Trap [Method], 46
Enable TD [Method], 46
Exit (Method menu), 53

F

Finnigan, 59

G

GC compatibility, 10
GC data system software, 8
GC Start Time (min) [Method], 48
GC Status [Status], 50
GUI, 33

H

Hardware Tester window, 58
Help menu, 53
hooks.ini, 67

I

Import Method [Method menu], 52
Inject Duration (min) [Method], 47
Integrate with MassHunter or ChemStation [Config], 43
integrated mode, 8
introduction, 5

L

license, 69
Limits Settings [Config], 43
LN2 [Status], 50
Log Book, 51

M

macros, 67
 Manual Control (Troubleshooting) [System menu], 53
 Manual Control window, 56
 manuals, 1
 MassHunter, 8
 MassHunter compatibility, 10
 MassHunter macros and modifications, 67
 MassHunter or ChemStation Program Path [Config], 43
 menu bar, 52
 Method Edit View (description), 28
 Method Edit View [View menu], 53
 method import, 49
 method not saved indicator, 49
 method using, 28
 Method window, 45
 Modify Sample [Sequence], 56

O

Open Method [Method menu], 52

P

phone, 3
 Pressure (psi) [Status], 50
 Print Method [Method menu], 53
 Process Queue (ON/OFF) [Sequence], 56
 Purge Duration (min) [Method], 47
 Purge [Status], 50

Q

quick start notes, 1

R

ramps, 48
 reinstalling MassHunter/ChemStation, 22
 Reset Controller [Run menu], 53
 Restore Defaults [Config], 45
 RS232, 38
 Run Monitoring View [View menu], 53
 Run Sample(s) [Run menu], 53
 Run window, 54
 running a sequence, 31
 running a single sample, 29

S

Sample File [Status], 50
 Sample Log Book, 51
 Sample Name [Run], 54
 Save Method As [Method menu], 52
 Save Method [Method menu], 52
 saving settings, 29
 Sequence window, 55
 serial communications port, 38

sistd.mac, 67
 software change list, 72
 software installation, 13
 software operation, 25
 standalone mode, 8
 Start Thermal Desorption Run [Run], 55
 starting the TD software, 22
 Status window, 49
 support, 3
 system requirements, 10
 system startup, 28

T

TD GC Gas Divert Time (sec) [Config], 44
 TD Max Heat Time (min) [Config], 44
 TD Max Inject Time (min) [Config], 44
 TD Max Pressure (psi) [Config], 44
 TD Max Purge Time (min) [Config], 44
 TD Max Ramp Rate (C/min) [Config], 45
 TD Max Temp (C) [Config], 44
 TD method using, 28
 TD Method [Sequence], 56
 TD Min Pressure to Run (psi) [Config], 44
 TD Status [Status], 50
 TD Temp (C) [Status], 50
 TD Tube Cool Time (min) [Config], 44
 Thermo, 59
 Time (min) [Status], 50
 toolbar, 52, 54
 Tube # [Sequence], 56
 Tube Number [Run], 55
 Tube [Status], 50

U

uninstallation, 22
 Up [Sequence], 56
 USB, 38
 user.mac, 67

V

validating software, 23
 View Sequence Table [Run], 55

W

web page, 3
 window
 Command Tester, 58
 Configuration, 35
 Hardware Tester, 58
 Manual Control, 56
 menu and toolbar, 52
 Method, 45
 Run, 54
 Sample Log Book, 51

Sequence, 55

Status, 49

windows, 33

X

Xcalibur, 59